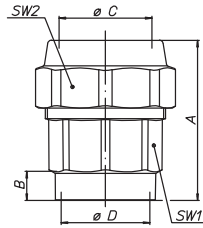


# AXO • PE • METAL

Raccordo per tubi PE con anello stringitubo in **OTTONE**

Fitting for PE-pipe with **BRASS** pipe grip cone

## Art. H.0330 AXO•PE•METAL

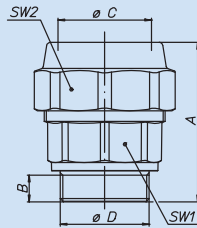


Raccordo diritto femmina per tubi in polietilene, **con componenti interni in ottone**, sabbiato.

Straight fitting for PE-pipe, female, **with inner components in brass**, sandblasted.

SIZE	½"x20	¾"x25	1"x32	1 ¼"x40	1 ½"x50	2"x63			
A mm	44	51,8	59	66,5	76,5	89			
B mm	9,7	11,2	12,7	13,7	15,7	17,7			
øC mm	20	25	32	40	50	63			
øD mm	½"	¾"	1"	1 ¼"	1 ½"	2"			
SW1 mm	25	31	38	47	57	70			
SW2 mm	34	40	50	59	72	86			
Peso/Weight gr.	100	160	260	400	635	945			

## Art. H.0332 AXO•PE•METAL

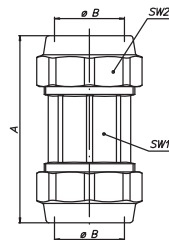


Raccordo diritto maschio per tubi in polietilene, **con componenti interni in ottone**, sabbiato.

Straight fitting for PE-pipe, male, **with inner components in brass**, sandblasted.

SIZE	½"x20	¾"x25	1"x32	1 ¼"x40	1 ½"x50	2"x63			
A mm	44	51,3	58,5	65,5	75,5	87,5			
B mm	8,7	10,2	11,7	12,7	14,2	16,2			
øC mm	20	25	32	40	50	63			
øD mm	½"	¾"	1"	1 ¼"	1 ½"	2"			
SW1 mm	25	31	38	47	57	70			
SW2 mm	34	40	50	59	72	86			
Peso/Weight gr.	100	155	252	400	570	900			

## Art. H.0334 AXO•PE•METAL

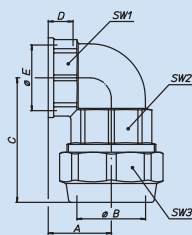


Raccordo diritto bigiunto di accoppiamento per tubi in polietilene, **con componenti interni in ottone**, sabbiato.

Straight double fitting for PE-pipe, **with inner components in brass**, sandblasted.

SIZE	mm 20	mm 25	mm 32	mm 40	mm 50	mm 63	mm 75*		
A mm	64,5	75,5	85,5	96,5	113	133	163		
øB mm	20	25	32	40	50	63	75		
SW1 mm	25	31	38	47	57	70	-		
SW2 mm	34	40	50	59	72	86	-		
Peso/Weight gr.	180	252	414	608	982	1430	1750		

## Art. H.0336 AXO•PE•METAL

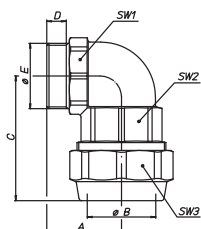


Raccordo a squadra femmina per tubi in polietilene, **con componenti interni in ottone**, sabbiato.

Angled fitting for PE-pipe, female, **with inner components in brass**, sandblasted.

SIZE	½"x20	¾"x25	1"x32	1 ¼"x40	1 ½"x50	2"x63			
A mm	23,5	29,5	34,5	39	46	55			
øB mm	20	25	32	40	50	63			
C mm	43	52	60	70,5	83,5	100,5			
D mm	9,7	11,2	12,7	13,7	15,7	17,7			
øE mm	½"	¾"	1"	1 ¼"	1 ½"	2"			
SW1	25	31	38	47	57	70			
SW2	25	31	38	47	57	70			
SW3	34	40	50	59	72	86			
Peso/Weight gr.	132	210	340	510	870	1314			

### Art. H.0338 AXO•PE•METAL

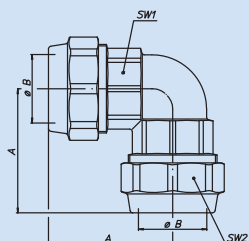


Raccordo a squadra maschio per tubi in polietilene, **con componenti interni in ottone, sabbatiato.**

Angled fitting for PE-pipe, male, **with inner components in brass, sandblasted.**

SIZE	1/2"x20	3/4"x25	1"x32	1 1/4"x40	1 1/2"x50	2"x63			
A mm	28	33	40	47	54	64,5			
øB mm	20	25	32	40	50	63			
C mm	43	52	60	70,5	83,5	100,5			
D mm	8,7	10,2	11,7	12,7	14,2	16,2			
øE mm	1/2"	3/4"	1"	1 1/4"	1 1/2"	2"			
SW1 mm	25	31	38	47	57	70			
SW2 mm	25	31	38	47	57	70			
SW3 mm	34	40	50	59	72	80			
Peso/Weight gr.	140	207	360	570	870	1350			

### Art. H.0340 AXO•PE•METAL

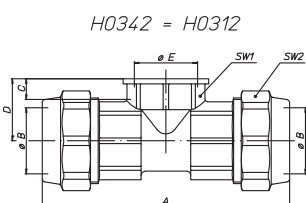


Raccordo a squadra bigiunto di accoppiamento per tubi in polietilene, **con componenti interni in ottone, sabbatiato.**

Angled double fitting for PE-pipe, **with inner components in brass, sandblasted.**

SIZE	mm 20	mm 25	mm 32	mm 40	mm 50	mm 63			
A mm	43	52	60	70,5	83,5	100,5			
øB mm	20	25	32	40	50	63			
SW1 mm	25	31	38	47	57	70			
SW2 mm	34	40	50	59	72	86			
Peso/Weight gr.	200	298	480	888	1200	1813			

### Art. H.0342 AXO•PE•METAL

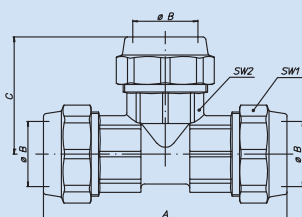


Raccordo a "T" femmina per tubi in polietilene, **con componenti interni in ottone, sabbatiato.**

T-fitting for PE-pipe, female, **with inner components in brass, sandblasted.**

SIZE	1/2"x20	3/4"x25	1"x32	1 1/4"x40	1 1/2"x50	2"x63			
A mm	80,5	96,5	112,5	131	156	187			
øB mm	20	25	32	40	50	63			
C mm	9,7	11,2	12,7	13,7	15,7	17,7			
D mm	23,5	29,5	34,5	39	46	55			
øE mm	1/2"	3/4"	1"	1 1/4"	1 1/2"	2"			
SW1 mm	34	40	50	59	72	86			
SW2 mm	25	31	38	47	57	70			
Peso/Weight gr.	213	320	547	585	1310	1950			

### Art. H.0346 AXO•PE•METAL



Raccordo a "T" di accoppiamento per tubi in polietilene, **con componenti interni in ottone, sabbatiato.**

T-fitting for PE-pipe, **with inner components in brass, sandblasted.**

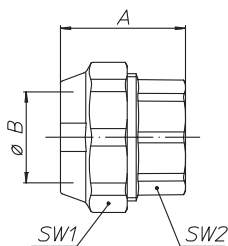
SIZE	mm 20	mm 25	mm 32	mm 40	mm 50	mm 63			
A mm	80,5	96,5	112,5	131	156	187			
øB mm	20	25	32	40	50	63			
C mm	43,5	52	60	70,5	83,5	100,5			
SW1 mm	25	31	38	47	57	70			
SW2 mm	34	40	50	59	72	86			
Peso/Weight gr.	300	406	680	1050	1840	2430			

# AXO • PE • METAL

Raccordo per tubi PE con anello stringitubo in OTTONE

Fitting for PE-pipe with BRASS pipe grip cone

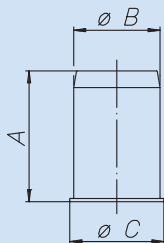
## Art. H.0347 AXO•PE•METAL



Tappo per tubi in polietilene composto da O-ring e anello e cono in ottone.  
Plug for PE-pipe with brass components.

SIZE	mm 20	mm 25	mm 32	mm 40	mm 50	mm 63			
A mm	33	39,5	44	50	58,5	68,5			
øB mm	20	25	32	40	50	63			
SW1 mm	34	40	50	59	72	86			
SW2 mm	25	31	38	47	57	70			
Peso/Weight gr.	100	190	230	285	630	915			

## Art. H.0915 AXO•PE



Boccola di rinforzo.  
Pressure cone.

SIZE	mm 20	mm 25	mm 32	mm 40	mm 50	mm 63	mm 75	mm 90	
A mm	29	35	39	45	53	67	80	90	
øB mm	13,7	18,7	25,7	32,2	40,4	51	60,8	73,2	
øC mm	15	20	28	34	42	59,5	65	78	
Peso/Weight gr.	12	19	28	54	52	87	164	234	