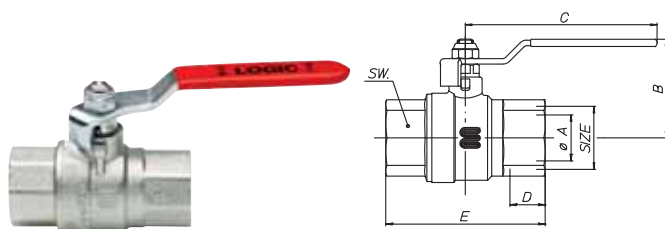


LOGIC

Valvola a sfera a passaggio totale serie pesante Heavy line full bore ball valve

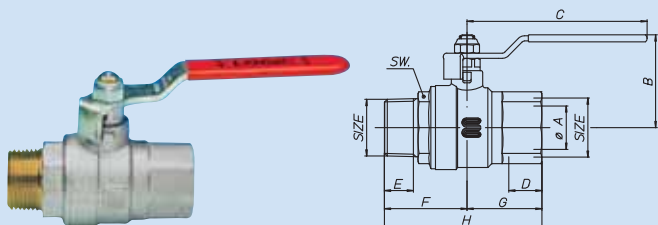
Art. S.0191 LOGIC



Valvola a sfera a passaggio totale con leva ferro, femmina/femmina, serie pesante, nichelata.
Full bore ball valve with steel handle, female/female, heavy line, nickel-plated.

SIZE	¼"	¾"	½"	¾"	1"	1¼"	1½"	2"	2½"	3"	4"
øA pass./bore	10	10	15	20	25	32	40	50	65	80	100
B mm	38	38	42	49,5	53,5	63,5	72,5	84	102	113,5	135
C mm	90	90	90	105	105	120	140	170	170	250	250
D mm	11	11,4	15	16,3	19,1	21,4	21,4	25,7	30,2	33,3	39,3
E mm	47,5	49,5	65	73,5	86,5	101,5	111,5	132,5	158	182,5	219
SW mm	17	21	26	32	39	48	55	68	83	97	124
Peso/Weight gr.	140	153	258	404	633	1044	1608	2716	3526	5657	10663

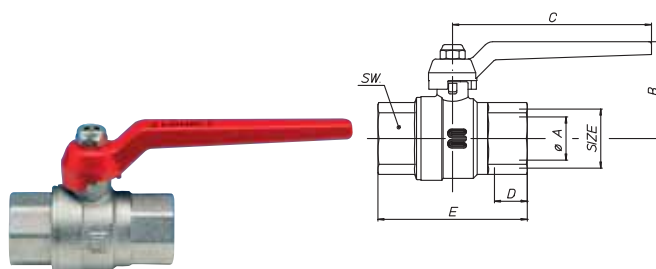
Art. S.0192 LOGIC



Valvola a sfera a passaggio totale con leva ferro, maschio/femmina, serie pesante, nichelata.
Full bore ball valve with steel handle, male/female, heavy line, nickel-plated.

SIZE	¼"	¾"	½"	¾"	1"	1¼"	1½"	2"		
øA pass./bore	10	10	15	20	25	32	40	50		
B mm	38	38	42	49,5	53,5	63,5	72,5	84		
C mm	90	90	90	105	105	120	140	170		
D mm	11	11,4	15	16,3	19,1	21,4	21,4	25,7		
E mm	9,7	10,1	13,2	14,5	16,8	19,1	19,1	23,4		
F mm	30,75	31,25	38	42,25	47,75	54,24	60,25	72,75		
G mm	23,75	24,75	32,5	36,75	43,25	50,75	55,75	66,25		
H mm	54,5	56	70,5	79	91	105	116	139		
SW mm	17	21	26	32	39	48	55	68		
Peso/Weight gr.	155	169	262	420	638	1069	1658	2752		

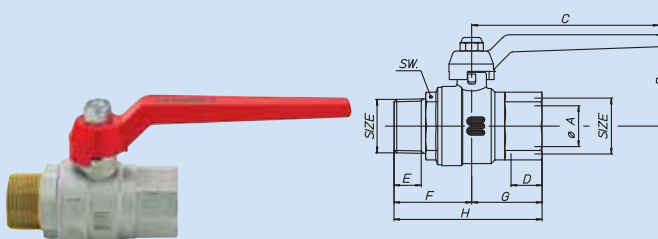
Art. S.0194 LOGIC



Valvola a sfera a passaggio totale con leva alluminio, femmina/femmina, serie pesante, nichelata.
Full bore ball valve with aluminium lever, female/female, heavy line, nickel-plated.

SIZE	¼"	¾"	½"	¾"	1"	1¼"	1½"	2"	2½"	3"	4"
øA pass./bore	10	10	15	20	25	32	40	50	65	80	100
B mm	39,5	39,5	41,5	51	55	64,5	75,5	87,5	108	119,5	142
C mm	80	80	95	115	115	130	150	170	170	235	235
D mm	11	11,4	15	16,3	19,1	21,4	21,4	25,7	30,2	33,3	39,3
E mm	47,5	49,5	65	73,5	86,5	101,5	111,5	132,5	158	181,5	219
SW mm	17	21	26	32	39	48	55	68	83	97	124
Peso/Weight gr.	122	135	250	380	612	1010	1579	2678	3484	5634	10640

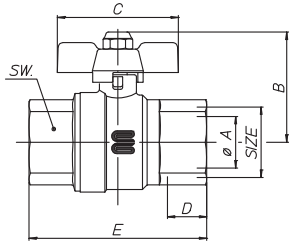
Art. S.0195 LOGIC



Valvola a sfera a passaggio totale con leva alluminio, maschio/femmina, serie pesante, nichelata.
Full bore ball valve with aluminium lever, male/female, heavy line, nickel-plated.

SIZE	¼"	¾"	½"	¾"	1"	1¼"	1½"	2"		
øA pass./bore	10	10	15	20	25	32	40	50		
B mm	39,5	39,5	41,5	51	55	64,5	75,5	87,5		
C mm	80	80	95	115	115	130	150	170		
D mm	11	11,4	15	16,3	19,1	21,4	21,4	25,7		
E mm	9,7	10,1	13,2	14,5	16,8	19,1	19,1	23,4		
F mm	30,75	31,25	38	42,25	47,75	54,25	60,25	72,75		
G mm	23,75	24,75	32,5	36,75	43,25	50,75	55,75	66,25		
H mm	54,5	56	70,5	79	91	105	116	139		
SW mm	17	21	26	32	39	48	55	68		
Peso/Weight gr.	137	151	250	399	617	1035	1440	2714		

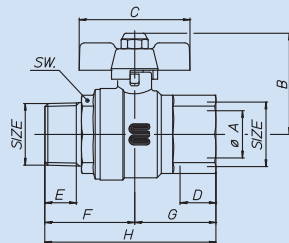
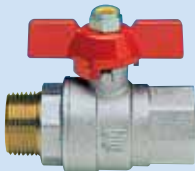
Art. S.0197 LOGIC



Valvola a sfera a passaggio totale con farfalla, femmina/femmina, serie pesante, nichelata.
Full bore ball valve with T-handle, female/female, heavy line, nickel-plated.

SIZE	¼"	¾"	½"	¾"	1"				
øA pass./bore	10	10	15	20	25				
B mm	33,75	33,75	40,5	49,2	53,2				
C mm	52	52	52	65	65				
D mm	11	11,4	15	16,3	19,1				
E mm	47,5	49,5	65	73,5	86,5				
SW mm	17	21	26	32	39				
Peso/Weight gr.	117	130	236	370	599				

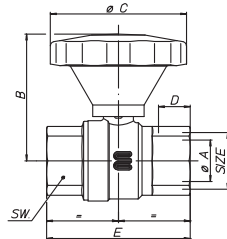
Art. S.0198 LOGIC



Valvola a sfera a passaggio totale con farfalla, maschio/femmina, serie pesante, nichelata.
Full bore ball valve with T-handle, male/female, heavy line, nickel-plated.

SIZE	¼"	¾"	½"	¾"	1"				
øA pass./bore	10	10	15	20	25				
B mm	33,75	33,75	40,5	49,2	53,2				
C mm	52	52	52	65	65				
D mm	11	11,4	15	16,3	19,1				
E mm	9,7	10,1	13,2	14,5	16,8				
F mm	30,75	31,25	38	42,25	47,75				
G mm	23,75	24,75	32,5	36,75	43,25				
H mm	54,5	56	70,5	79	91				
SW mm	17	21	26	32	39				
Peso/Weight gr.	132	146	240	386	604				

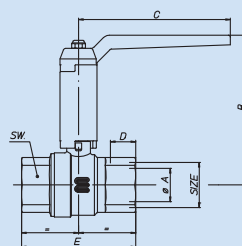
Art. S.0450 LOGIC•BRAVO



Valvola a sfera a passaggio totale con manopola di riduzione BRAVO, femmina/femmina, nichelata.
Full bore ball valve with BRAVO gear handle, female/female, nickel-plated.

SIZE	¼"	¾"	½"	¾"	1"	1¼"	1½"	2"	
øA pass./bore	10	10	15	20	25	32	40	50	
B mm	67	67	70,5	76	80	116	123	131,5	
øC mm	82	82	82	82	82	128	128	128	
D mm	11	11,4	15	16,3	19,1	21,4	21,4	25,7	
E mm	47,5	49,5	65	73,5	86,5	101,5	111,5	132,5	
SW mm	17	21	26	32	39	48	55	68	
Peso/Weight gr.	184	197	302	428	657	1218	1760	2840	

Art. S.0454 LOGIC•XT



Valvola a sfera a passaggio totale con prolunga XT serie pesante, femmina/femmina, nichelata.
Full bore ball valve with extended stem, female/female, nickel-plated.

SIZE	¼"	¾"	½"	¾"	1"	1¼"	1½"	2"	2½"	3"	4"
øA pass./bore	10	10	15	20	25	32	40	50	65	80	100
B mm	96,5	96,5	98,5	109,5	113,5	123	133	145	164,5	176	197,5
C mm	80	80	95	115	115	130	150	170	170	235	235
D mm	11	11,4	15	16,3	19,1	21,4	21,4	25,7	30,2	33,3	39,3
E mm	47,5	49,5	65	73,5	86,5	101,5	111,5	132,5	158	181,5	219
SW mm	17	21	26	32	39	48	55	68	83	97	124
Peso/Weight gr.	203	216	326	484	713	1160	1747	2925	3723	6366	11562