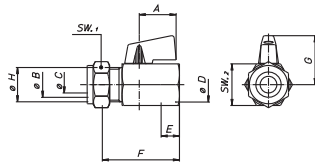


# MINI • BON

Mini valvola a sfera  
Mini ball valve

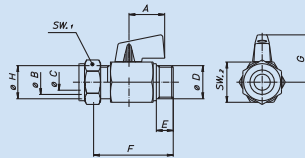
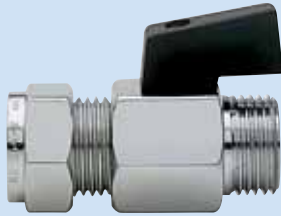
## Art. S.0306 MIN•BON



Valvola a sfera, con levetta, femmina/anello di compressione, cromata.  
Ball valve, with lever, female/compression ring, chrome-plated.

SIZE	3/8" x10	3/8" x12	1/2" x12	1/2" x14					
A mm	22	22	22	22					
øB mm	10	12	12	15					
øC mm	8	8	10	10					
øD	G 3/8"	G 3/8"	G 1/2"	G 1/2"					
E mm	9	9	10,5	10,5					
F mm	40	40	45	45					
G mm	27	27	29	29					
øH	G 3/8"	G 3/8"	G 3/8"	G 1/2"					
SW1 mm	19	19	19	24					
SW2 mm	21	21	25	25					

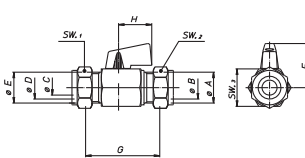
## Art. S.0307 MIN•BON



Valvola a sfera, con levetta, maschio/anello di compressione, cromata.  
Ball valve, with lever, male/compression ring, chrome-plated.

SIZE	3/8" x10	3/8" x12	1/2" x12	1/2" x14					
A mm	22	22	22	22					
øB mm	10	12	12	15					
øC mm	8	8	10	10					
øD	G 3/8"	G 3/8"	G 1/2"	G 1/2"					
E mm	9	9	10,5	10,5					
F mm	41	41	50	50					
G mm	27	27	29	29					
øH	G 3/8"	G 3/8"	G 3/8"	G 1/2"					
SW1 mm	19	19	19	24					
SW2 mm	21	21	25	25					

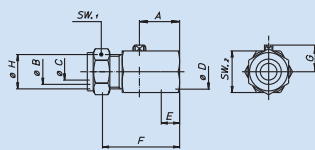
## Art. S.0308 MIN•BON



Valvola a sfera con levetta, anello di compressione/anello di compressione, cromata.  
Ball valve with lever, compression ring/compression ring, chrome-plated.

SIZE	10x3/8" x10	12x3/8" x12	12x1/2" x12	14x1/2" x14					
øA	G 3/8"	G 3/8"	G 3/8"	G 1/2"					
øB mm	10	12	12	15					
øC mm	8	8	10	10					
øD mm	10	12	12	15					
øE	G 3/8"	G 3/8"	G 3/8"	G 1/2"					
F mm	27	27	29	29					
G mm	41	41	41	50					
øH mm	22	22	22	22					
SW1 mm	19	19	19	24					
SW2 mm	19	19	19	24					
SW3 mm	21	21	25	25					

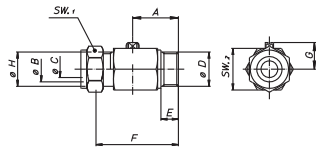
## Art. S.0309 MIN•BON



Valvola a sfera, manovra con cacciavite, femmina/anello di compressione, cromata.  
Ball valve, to be operated by means of a screwdriver, female/compression ring, chrome-plated.

SIZE	3/8" x10	3/8" x12	1/2" x12	1/2" x15					
A mm	21	21	25	25					
øB mm	10	12	12	15					
øC mm	8	8	10	10					
øD	G 3/8"	G 3/8"	G 1/2"	G 1/2"					
E mm	9	9	10,5	10,5					
F mm	40	40	45	45					
G mm	27	27	29	29					
øH	G 3/8"	G 3/8"	G 3/8"	G 1/2"					
SW1 mm	19	19	19	24					
SW2 mm	21	21	25	25					

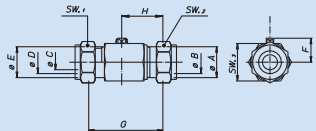
### Art. S.0310 MIN•BON



Valvola a sfera, manovra con cacciavite, maschio/anello di compressione, cromata.  
Ball valve, to be operated by means of a screwdriver, male/compression ring, chrome-plated.

SIZE	3/8"x10	3/8"x12	1/2"x12	1/2"x15					
A mm	33	33	38,5	38,5					
øB mm	10	12	12	15					
øC mm	8	8	10	10					
øD	G 3/8"	G 3/8"	G 1/2"	G 1/2"					
E mm	9	9	10,5	10,5					
F mm	41	41	50	50					
G mm	27	27	29	29					
øH	G 3/8"	G 3/8"	G 3/8"	G 1/2"					
SW1 mm	19	19	19	24					
SW2 mm	21	21	25	25					

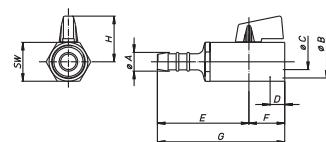
### Art. S.0311 MIN•BON



Valvola a sfera, manovra con cacciavite, anello di compressione/anello di compressione, cromata.  
Ball valve, to be operated by means of a screwdriver, compression ring/compression ring, chrome-plated.

SIZE	10x3/8"x10	12x3/8"x12	12x1/2"x12	15x1/2"x15					
øA	G 3/8"	G 3/8"	G 3/8"	G 1/2"					
øB mm	10	12	12	15					
øC mm	8	8	10	10					
øD mm	10	12	12	15					
øE	G 3/8"	G 3/8"	G 3/8"	G 1/2"					
F mm	27	27	29	29					
G mm	41	41	41	50					
øH mm	33	33	38,5	38,5					
øI mm	11,7	13,7	13,7	16,8					
SW1 mm	19	19	19	24					
SW2 mm	19	19	19	24					
SW3 mm	21	21	25	25					

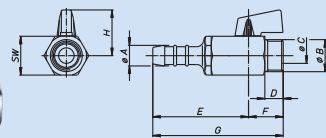
### Art. S.0312 MIN•BON



Valvole a sfera, femmina/femmina, con levetta cromata.  
Ball valve, female/female, with chrome-plated lever.

SIZE	1/4"	3/8"	1/2"						
øA	10,5	14	14						
øB	1/4"	3/8"	1/2"						
øC mm	5,5	8	10						
D mm	8	8,5	10						
E mm	48,5	50	55,5						
F mm	18,25	20,25	24						
G mm	66,75	70,25	79,5						
H mm	22	23,5	30						
SW mm	19	21	25						

### Art. S.0313 MIN•BON



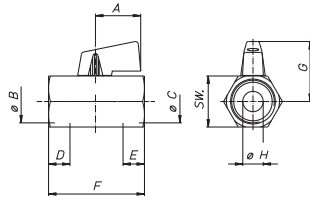
Valvole a sfera, maschio/femmina, con levetta cromata.  
Ball valve, male/female, with chrome-plated lever.

SIZE	1/4"	3/8"	1/2"						
øA	10,5	14	14						
øB	1/4"	3/8"	1/2"						
øC mm	5,5	8	10						
D mm	8,8	8,8	9,8						
E mm	48,5	50	55,5						
F mm	17	19,5	23						
G mm	65,5	69,5	78,5						
H mm	22	23,5	30						
SW mm	19	21	25						

# MINI • BON

Mini valvola a sfera  
Mini ball valve

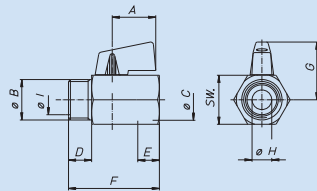
## Art. S.0330 MIN•BON



Valvole a sfera con levetta, femmina/femmina, cromata.  
Ball valve with lever, female/female, chrome-plated.

SIZE	1/8"	1/4"	3/8"	1/2"	3/4"					
A mm	22	22	22	22	22					
øB	G.1/8"	G.1/4"	G.3/8"	G.1/2"	G.3/4"					
øC	G.1/8"	G.1/4"	G.3/8"	G.1/2"	G.3/4"					
D mm	9	9	10	10,5	13,5					
E mm	9	9	9	10,5	13,5					
F mm	39	39	42	47	54					
G mm	27	27	27	29	31,5					
øH mm	6	8	8	10	12					
SW mm	21	21	21	25	30					

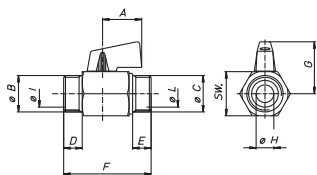
## Art. S.0331 MIN•BON



Valvole a sfera con levetta, maschio/femmina, cromata.  
Ball valve with lever, male/female, chrome-plated.

SIZE	1/8"	1/4"	3/8"	1/2"	3/4"					
A mm	22	22	22	22	22					
øB	G.1/8"	G.1/4"	G.3/8"	G.1/2"	G.3/4"					
øC	G.1/8"	G.1/4"	G.3/8"	G.1/2"	G.3/4"					
D mm	9	9	9	10,5	13,5					
E mm	9	9	9	10,5	13,5					
F mm	39	39	40	45	51					
G mm	27	27	27	29	31,5					
øH mm	6	8	8	10	12					
øI mm	6	8	12	15	18					
SW mm	21	21	21	25	30					

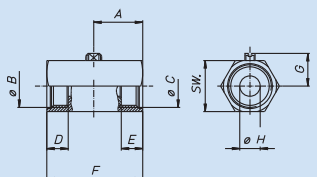
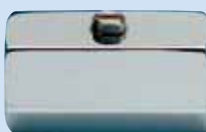
## Art. S.0332 MIN•BON



Valvole a sfera con levetta, maschio/maschio, cromata.  
Ball valve with lever, male/male, chrome-plated.

SIZE	1/8"	1/4"	3/8"	1/2"						
A mm	22	22	22	22						
øB	G.1/8"	G.1/4"	G.3/8"	G.1/2"						
øC	G.1/8"	G.1/4"	G.3/8"	G.1/2"						
D mm	9	9	9	10,5						
E mm	9	9	9	10,5						
F mm	41	41	41	50						
G mm	27	27	27	29						
øH mm	6	8	8	10						
øI mm	6	8	12	15						
øL mm	6	8	12	15						
SW mm	21	21	21	25						

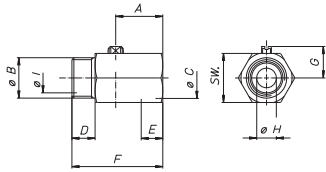
## Art. S.0333 MIN•BON



Valvola a sfera, manovra con cacciavite, femmina/femmina, cromata.  
Ball valve, to be operated by means of a screwdriver, female/female, chrome-plated.

SIZE	1/8"	1/4"	3/8"	1/2"	3/4"					
A mm	18	18	21	24	27					
øB	G.1/8"	G.1/4"	G.3/8"	G.1/2"	G.3/4"					
øC	G.1/8"	G.1/4"	G.3/8"	G.1/2"	G.3/4"					
D mm	9	9	10	10,5	13,5					
E mm	9	9	9	10,5	13,5					
F mm	39	39	42	47	54					
G mm	12,5	12,5	12,5	14,5	17					
øH mm	6	8	8	10	12					
SW mm	21	21	21	25	30					

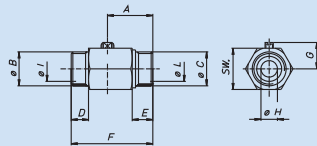
### Art. S.0334 MIN•BON



Valvola a sfera, manovra con cacciavite, maschio/femmina, cromata.  
Ball valve, to be operated by means of a screwdriver, male/female, chrome-plated.

SIZE	1/8"	1/4"	3/8"	1/2"	3/4"				
A mm	18	18	21	24	27				
øB	G.1/8"	G.1/4"	G.3/8"	G.1/2"	G.3/4"				
øC	G.1/8"	G.1/4"	G.3/8"	G.1/2"	G.3/4"				
D mm	9	9	9	10,5	13,5				
E mm	9	9	9	10,5	13,5				
F mm	39	39	40	45	51				
G mm	12,5	12,5	12,5	14,5	17				
øH mm	6	8	8	10	12				
øI mm	6	8	12	15	18				
SW mm	21	21	21	25	30				

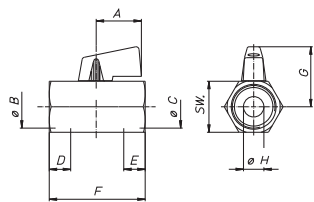
### Art. S.0335 MIN•BON



Valvola a sfera, manovra con cacciavite, maschio/maschio, cromata.  
Ball valve, to be operated by means of a screwdriver, male/male, chrome-plated.

SIZE	1/8"	1/4"	3/8"	1/2"					
A mm	18	18	21	24					
øB	G.1/8"	G.1/4"	G.3/8"	G.1/2"					
øC	G.1/8"	G.1/4"	G.3/8"	G.1/2"					
D mm	9	9	9	10,5					
E mm	9	9	9	10,5					
F mm	41	41	41	50					
G mm	12,5	12,5	12,5	14,5					
øH mm	6	8	8	10					
øI mm	6	8	12	15					
øL mm	6	8	12	15					
SW mm	21	21	21	25					

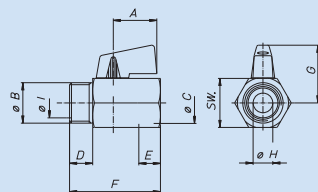
### Art. S.1317 MIN•BON•LUX



Valvole a sfera, femmina/femmina, con levetta cromata.  
Ball valve, female/female, with chrome-plated lever.

SIZE	1/8"	1/4"	3/8"	1/2"	3/4"				
A mm	22	22	22	22	22				
øB	G.1/8"	G.1/4"	G.3/8"	G.1/2"	G.3/4"				
øC	G.1/8"	G.1/4"	G.3/8"	G.1/2"	G.3/4"				
D mm	9	9	10	10,5	13,5				
E mm	9	9	9	10,5	13,5				
F mm	39	39	42	47	54				
G mm	27	27	27	29	31,5				
øH mm	6	8	8	10	12				
SW mm	21	21	21	25	30				

### Art. S.1318 MIN•BON•LUX



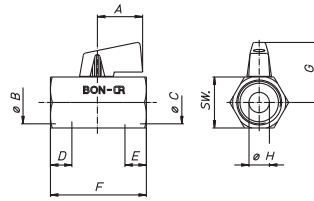
Valvole a sfera, maschio/femmina, con levetta cromata.  
Ball valve, male/female, with chrome-plated lever.

SIZE	1/8"	1/4"	3/8"	1/2"	3/4"				
A mm	22	22	22	22	22				
øB	G.1/8"	G.1/4"	G.3/8"	G.1/2"	G.3/4"				
øC	G.1/8"	G.1/4"	G.3/8"	G.1/2"	G.3/4"				
D mm	9	9	9	10,5	13,5				
E mm	9	9	9	10,5	13,5				
F mm	39	39	40	45	51				
G mm	27	27	27	29	31,5				
øH mm	6	8	8	10	12				
øI mm	6	8	12	15	18				
SW mm	21	21	21	25	30				

# MINI • BON

Mini valvola a sfera  
Mini ball valve

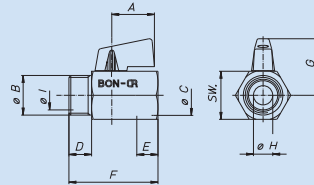
## Art. S.0338 MIN•BON•CR



Ottone DZR - Valvole a sfera con levetta, femmina/femmina, cromata.  
DZR Brass – Ball valve with lever, female/female, chrome-plated.

SIZE	1/8"	1/4"	3/8"	1/2"	3/4"				
A mm	22	22	22	22	22				
øB	G.1/8"	G.1/4"	G.3/8"	G.1/2"	G.3/4"				
øC	G.1/8"	G.1/4"	G.3/8"	G.1/2"	G.3/4"				
D mm	9	9	10	10,5	13,5				
E mm	9	9	9	10,5	13,5				
F mm	39	39	42	47	54				
G mm	27	27	27	29	31,5				
øH mm	6	8	8	10	12				
SW mm	21	21	21	25	30				

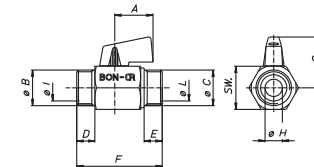
## Art. S.0339 MIN•BON•CR



Ottone DZR - Valvole a sfera con levetta, maschio/femmina, cromata.  
DZR Brass – Ball valve with lever, male/female, chrome-plated.

SIZE	1/8"	1/4"	3/8"	1/2"	3/4"	1"			
A mm	22	22	22	22	22	22			
øB	G.1/8"	G.1/4"	G.3/8"	G.1/2"	G.3/4"	G.1"			
øC	G.1/8"	G.1/4"	G.3/8"	G.1/2"	G.3/4"	G.1"			
D mm	9	9	9	10,5	13,5	15			
E mm	9	9	9	10,5	13,5	15			
F mm	39	39	40	45	51	62,5			
G mm	27	27	27	29	31,5	35			
øH mm	6	8	8	10	12	17,5			
øI mm	6	8	12	15	18	25			
SW mm	21	21	21	25	30	37			

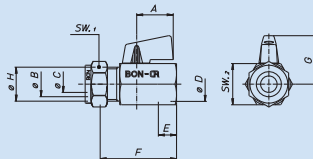
## Art. S.0340 MIN•BON•CR



Ottone DZR - Valvole a sfera con levetta, maschio/maschio, cromata.  
DZR Brass – Ball valve with lever, male/male, chrome-plated.

SIZE	1/8"	1/4"	3/8"	1/2"	3/4"				
A mm	22	22	22	22	22				
øB	G.1/8"	G.1/4"	G.3/8"	G.1/2"	G.3/4"				
øC	G.1/8"	G.1/4"	G.3/8"	G.1/2"	G.3/4"				
D mm	9	9	9	10,5	13,5				
E mm	9	9	9	10,5	13,5				
F mm	41	41	41	50	55				
G mm	27	27	27	29	31,5				
øH mm	6	8	8	10	12				
øI mm	6	8	12	15	18				
øL mm	6	8	12	15	18				
SW mm	21	21	21	25	30				

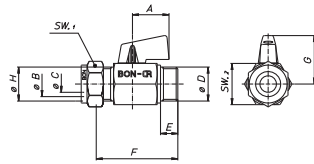
## Art. S.0344 MIN•BON•CR



Ottone DZR - Valvola a sfera, con levetta, femmina/anello di compressione, cromata.  
DZR Brass – Ball valve, with lever, female/compression ring, chrome-plated.

SIZE	1/4"x8	3/8"x10	3/8"x12	1/2"x12	1/2"x15	3/4"x18	3/4"x22	1"x28	
A mm	22	22	22	22	22	22	22	22	
øB mm	8	10	12	12	15	18	22	28	
øC mm	8	8	8	10	10	12	12	17,5	
øD	G.1/4"	G.3/8"	G.3/8"	G.1/2"	G.1/2"	G.3/4"	G.3/4"	G.1"	
E mm	9	9	9	10,5	10,5	13,5	13,5	15	
F mm	39	40	40	45	45	51	51	-	
G mm	27	27	27	29	29	31,5	31,5	35	
øH	G.1/4"	G.3/8"	G.3/8"	G.3/8"	G.1/2"	G.3/4"	M28x1,5	M34x1,5	
SW1 mm	17	19	19	19	24	30	32	38	
SW2 mm	21	21	21	25	25	30	30	37	

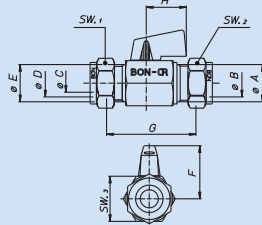
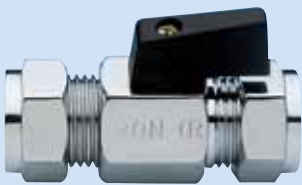
### Art. S.0345 MIN•BON•CR



**Ottone DZR** - Valvola a sfera, con levetta, maschio/anello di compressione, cromata.  
**DZR Brass** – Ball valve, with lever, male/compression ring, chrome-plated.

SIZE	1/4"x8	3/8"x10	3/8"x12	1/2"x12	1/2"x15	3/4"x18	3/4"x22	1"x28		
A mm	22	22	22	22	22	22	22	22		
øB mm	8	10	12	12	15	18	22	28		
øC mm	8	8	8	10	10	12	12	17,5		
øD	G.1/4"	G.3/8"	G.3/8"	G.1/2"	G.1/2"	G.3/4"	G.3/4"	G.1"		
E mm	9	9	9	10,5	10,5	13,5	13,5	15		
F mm	41	41	41	50	50	55	55	-		
G mm	27	27	27	29	29	31,5	31,5	35		
øH	G.1/4"	G.3/8"	G.3/8"	G.3/8"	G.1/2"	G.3/4"	M28x1,5	M34x1,5		
SW1 mm	17	19	19	19	24	30	32	38		
SW2 mm	21	21	21	25	25	30	30	37		

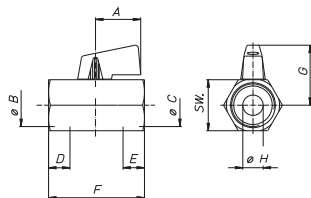
### Art. S.0346 MIN•BON•CR



**Ottone DZR** - Valvola a sfera con levetta, anello di compressione/anello di compressione, cromata.  
**DZR Brass** – Ball valve with lever, compression ring/compression ring, chrome-plated.

SIZE	10.8x12	10.8x15	10.8x16	12.8x16	12.8x16	12.8x16	12.8x16	15.0x15	15.0x15	10.8x10	12.8x12	15.0x16	16.0x16	16.8x18	18.2x18	22.8x22	28x1"x28
øA	G.3/8"	G.3/8"	G.3/8"	G.3/8"	G.3/8"	G.1/2"	G.1/2"	G.1/2"	G.3/8"	G.3/8"	G.1/2"	G.1/2"	G.1/2"	G.3/4"	M28x1,5	M34x1,5	
øB mm	10	10	10	12	12	15	15	10	12	15	16	18	18	22	28		
øC mm	8	8	8	8	10	10	10	8	8	10	10	12	12	17,5			
øD mm	12	15	16	16	12	12	15	10	12	16	16	18	22	28			
øE	G.3/8"	G.1/2"	G.1/2"	G.1/2"	G.3/8"	G.3/8"	G.1/2"	G.3/8"	G.3/8"	G.1/2"	G.1/2"	G.3/4"	M28x1,5	M34x1,5			
F mm	29	29	29	29	29	29	29	27	27	29	29	31,5	31,5	35			
G mm	41	41	41	41	41	50	50	41	41	50	50	55	48	-			
øH mm	22	22	22	22	22	22	22	22	22	22	22	22	22	22	22	22	22
SW1 mm	19	19	19	19	19	24	24	19	19	24	24	30	32	38			
SW2 mm	19	24	24	24	19	19	24	19	19	24	24	30	32	38			
SW3 mm	21	21	21	21	25	25	25	21	21	25	25	30	30	37			

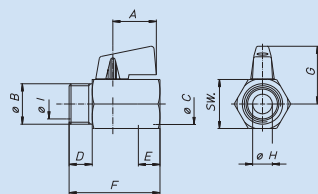
### Art. S.1351C MIN•BON•CR•LUX



**Ottone DZR** - Valvole a sfera, femmina/femmina, con levetta cromata.  
**DZR Brass** – Ball valve, female/female, with chrome-plated lever.

SIZE	3/8"	1/2"	3/4"														
A mm	22	22	22														
øB	G.3/8"	G.1/2"	G.3/4"														
øC	G.3/8"	G.1/2"	G.3/4"														
D mm	10	10,5	13,5														
E mm	9	10,5	13,5														
F mm	42	47	54														
G mm	27	29	31,5														
øH mm	8	10	12														
SW mm	21	25	30														

### Art. S.1352C MIN•BON•CR•LUX



Valvola a sfera femmina/femmina passaggio totale, nichelata con prolunga monoblocco.  
 Full bore ball valve, with monoblock extended stem, female/female, nickel-plated.

SIZE	3/8"	1/2"	3/4"														
A mm	22	22	22														
øB	G.3/8"	G.1/2"	G.3/4"														
øC	G.3/8"	G.1/2"	G.3/4"														
D mm	9	10,5	13,5														
E mm	9	10,5	13,5														
F mm	40	45	51														
G mm	27	29	31,5														
øH mm	8	10	12														
øI mm	12	15	18														
SW mm	21	25	30														