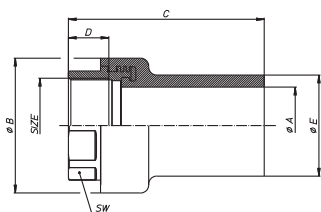


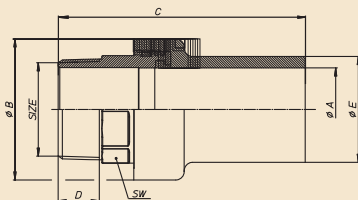
ART. R.1400 GIUNTO PER PE / PE JOINT FITTING



Giunto di transizione ottone/PE, femmina.
Joint fitting brass/PE, female.

SIZE	1/2" x 20mm	3/4" x 25mm	1" x 32mm	1" x 40mm	1 1/4" x 40mm	1 1/2" x 50mm	2" x 63mm	2 1/2" x 75mm	3" x 90mm	4" x 110mm	4" x 125mm		
ØA pass./bore	13,5	18,5	24	24	31,5	38	49,5	60	74	90	99		
ØB mm	37	42	50	50	64	70	84	107	119	152	152		
C mm	84	85	90	95	100	108	122	138	153	165	176		
D mm	17	16,8	19,1	19,1	21,4	19	23,7	30,2	33,3	39,3	39,3		
ØE mm	20	25	32	40	40	50	63	75	90	110	125		
SW mm	25	30	38	38	46	55	65	80	95	120	120		

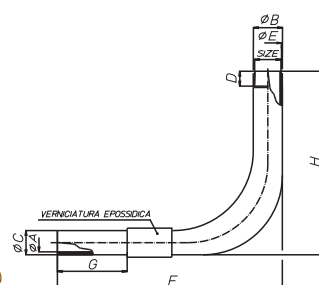
ART. R.1402 GIUNTO PER PE / PE JOINT FITTING



Giunto di transizione ottone/PE, maschio.
Joint fitting brass/PE, male.

SIZE	1/2" x 20mm	3/4" x 25mm	3/4" x 32mm	1" x 32mm	1" x 40mm	1 1/4" x 40mm	1 1/2" x 50mm	2" x 50mm	2" x 63mm	2 1/2" x 75mm	3" x 90mm	4" x 110mm	4" x 125mm
ØA pass./bore	13,5	18,5	18,5	24	24	31,5	38	38	49,5	60	74	90	99
ØB mm	37	42	42	50	50	64	70	84	84	107	119	152	152
C mm	100	103	103	109	113	123	131	138	147	158	181	202	212
D mm	13,2	14,5	14,5	16,8	16,8	19,1	19,1	23,4	23,4	26,7	29,8	35,8	35,8
ØE mm	20	25	32	32	40	40	50	50	63	75	90	110	125
SW mm	22	27	27	34	34	42	50	60	60	80	90	115	115

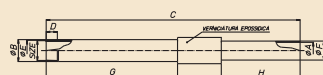
ART. R.1408 COLONNA MONTANTE SQ / PE JOINT FITTING



Giunto di transizione ferro/PE, curvo per acqua e gas combustibili.
Joint fitting steel/PE, angle for water and fuel gas.

SIZE	3/4" x 25mm	1" x 32mm	1 1/4" x 40mm	1 1/2" x 50mm	2" x 63mm	2 1/2" x 75mm	3" x 90mm						
ØA pass./bore	19	26	32,6	40,8	51,4	61,4	73,6						
ØB mm	30	37	47	52	64	79	93						
ØC mm	25	32	40	50	63	75	90						
D mm	14,5	16,8	19,1	19,1	23,4	26,7	29,8						
ØE mm	26,9	33,7	42,4	48,3	60,3	76,1	88,9						
F mm	750	750	750	750	800	1000	1000						
G mm	340	340	320	320	320	320	320						
H mm	800	800	800	800	800	800	800						

ART. R.1412 GIUNTO PER PE / PE JOINT FITTING

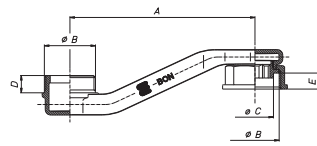


Giunto di transizione ferro/PE, diretto per acqua e gas combustibili.
Joint fitting steel/PE, straight for water and fuel gas.

SIZE	3/4" x 25mm	1" x 32mm	1 1/4" x 40mm	1 1/2" x 50mm	2" x 63mm	2 1/2" x 75mm	3" x 90mm	4" x 110mm					
ØA pass./bore	19	26	32,6	40,8	51,4	61,4	73,6	90					
ØB mm	30	37	47	52	64	79	93	119					
C mm	500	500	535	535	545	560	580	600					
D mm	14,5	16,8	19,1	19,1	23,4	26,7	29,8	35,8					
ØE mm	26,9	33,7	42,4	48,3	60,3	76,1	88,9	114,3					
ØF mm	25	32	40	50	63	75	90	110					
G mm	300	300	300	300	300	300	300	300					
H mm	140	140	170	170	175	190	195	215					

Giunti e raccordi Fittings

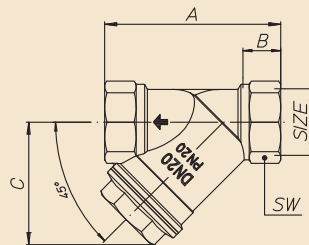
ART. S.0267 OMEGA



Adattatore per mensole maschio/femmina da mm 110 a mm 250, sabbiato.
Adapter for gas meters.

SIZE	140x1 1/4								
A mm	140								
øB	1 1/4								
C mm	30								
D mm	14								
E mm	13								

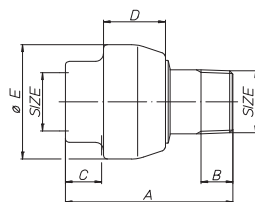
ART. G.0180 FILTRO-Y



Raccogliatore di impurità a «Y» femmina/femmina con filtro per gas combustibili, sabbiato.
Y-strainer with stainless steel sieves (ext. 0,4 mm – int. 0,3 mm) for fuel gas.

SIZE	3/8"	1/2"	3/4"	1"	1 1/4"	1 1/2"	2"		
A mm	55	58	70	87	96	106	126		
B mm	10	12	13	17	20	21	22		
C mm	40	40	50	60	68	75	90		
SW mm	21	25	31	38	48	55	68		
PN	16	16	16	16	16	16	16		
Peso/Weight gr.	130	150	240	395	700	860	1330		

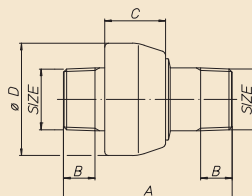
ART. S.0356 DL-JOINT



Giunto dielettrico filettato femmina/maschio.
A norma UNI CIG 10824 PN 10.
Dielectric joint, male/female.

SIZE	1/2"	3/4"	1"	1 1/4"	1 1/2"	2"	2 1/2"	3"	
A mm	100	110	120	135	145	150	180	200	
B mm	11,5	12,9	14,7	17,2	17,2	21,7	24,3	27,4	
C mm	15	16,3	19,1	21,4	21,4	25,7	30,2	33,3	
D mm	29	30	32	35	36	38	46	48	
øE mm	45	52	60	70	76	90	110	130	
PN bar	10	10	10	10	10	10	10	10	
Peso/Weight gr.	400	500	700	1000	1200	1700	3000	4000	

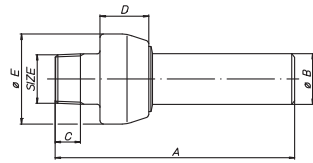
ART. S.0357 DL-JOINT



Giunto dielettrico filettato maschio/maschio.
A norma UNI CIG 10824 PN 10.
Dielectric joint, male/male.

SIZE		3/4"	1"	1 1/4"	1 1/2"	2"	2 1/2"	3"	
A mm		125	137	154	168	170	194	232	
B mm		12,9	14,7	17,2	17,2	21,7	24,3	27,4	
C mm		30	32	35	36	38	46	48	
øD mm		52	60	70	76	90	110	130	
PN bar		10	10	10	10	10	10	10	
Peso/Weight gr.		500	700	1000	1200	1700	3000	4000	

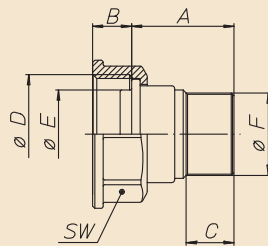
ART. S.0358 DL-JOINT



Giunto dielettrico maschio/a saldare.
A norma UNI CIG 10824 PN 10.
Dielectric joint, male/weldable end.

SIZE	½"	¾"	1"	1¼"	1½"	2"	2½"	3"		
A mm	156	170	183	203	214	221	255	275		
øB mm	22	27	34	43	49	61	77	90		
C mm	11,5	12,9	14,7	17,2	17,2	21,7	24,3	27,4		
D mm	29	30	32	35	36	38	46	48		
øE mm	45	52	60	70	76	90	110	130		
PN bar	10	10	10	10	10	10	10	10		
Peso/Weight gr.	450	600	800	1300	1500	1900	3800	5154		

ART. G.0195 CODOLO CON GIRELLO / NUT AND TAIL



Raccordo per contatore gas combustibili, sabbaiato.
Nut and tail for fuel gas meter.

SIZE	¾"x1¼"	1"x1¼"	1½"x2"	2"x2½"						
A mm	385	365	50,5	55,5						
B mm	125	125	12,5	14						
C mm	195	195	19,5	19,5						
øD mm	1¼"	1¼"	2"	2½"						
øE mm	31	31	46,5	58						
øF mm	¾"	1"	1½"	2"						
SW mm	45	45	64	79,5						
Peso/Weight gr.	189	191	485	720						