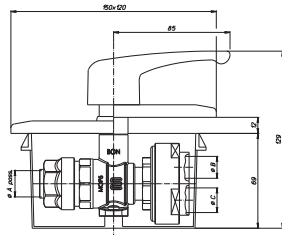


IN • GAS • DOPPIO

Rubinetto a sfera per gas combustibili da incasso con doppia uscita

Built-in ball valve for fuel gas with double outlet

ART. G.0401C IN•GAS•DOPPIO

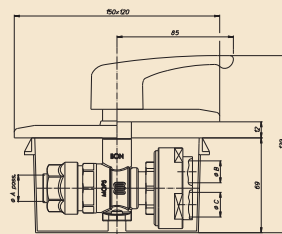


Rubinetto da incasso, con **doppia uscita**, ispezionabile come da norma UNI CIG 7129, leva e rosone **chromati** attacchi a saldare per tubo rame.

Built-in valve with **double outlet** with checking point, **chromed** lever-shield-weld fittings for copper pipe.

SIZE mm18	14x12*	14x14*	16x12*	16x14*	16x16*				
øA pass./bore	18	18	18	18	18				
øB tubo/pipe	14	14	16	16	16				
øC mm	12	14	12	14	16				
SIZE mm22	16x12*	16x14*	16x16*	18x12*	18x14*	18x16*	18x18*		
øA pass./bore	22	22	22	22	22	22	22		
øB tubo/pipe	16	16	16	18	18	18	18		
øC mm	12	14	16	12	14	16	18		

ART. G.0401H IN•GAS•DOPPIO

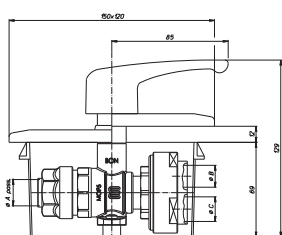


Rubinetto da incasso, con **doppia uscita**, ispezionabile come da norma UNI CIG 7129, leva e rosone **satinati-bruniti** attacchi a saldare per tubo rame.

Built-in valve with **double outlet** with checking point, **satined** lever-shield-weld fittings for copper pipe.

SIZE mm18	14x12*	14x14*	16x12*	16x14*	16x16*				
øA pass./bore	18	18	18	18	18				
øB tubo/pipe	14	14	16	16	16				
øC mm	12	14	12	14	16				
SIZE mm22	16x12*	16x14*	16x16*	18x12*	18x14*	18x16*	18x18*		
øA pass./bore	22	22	22	22	22	22	22		
øB tubo/pipe	16	16	16	18	18	18	18		
øC mm	12	14	16	12	14	16	18		

ART. G.0401I IN•GAS•DOPPIO

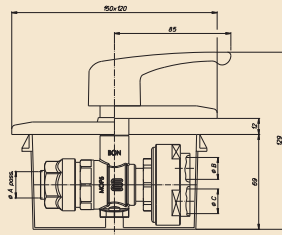


Rubinetto da incasso, con **doppia uscita**, ispezionabile come da norma UNI CIG 7129, leva e rosone **bianchi** per esterno attacchi a saldare per tubo rame.

Built-in valve with **double outlet** with checking point, **white** lever-shield-weld fittings for copper pipe.

SIZE mm18	14x12*	14x14*	16x12*	16x14*	16x16*				
øA pass./bore	18	18	18	18	18				
øB tubo/pipe	14	14	16	16	16				
øC mm	12	14	12	14	16				
SIZE mm22	16x12*	16x14*	16x16*	18x12*	18x14*	18x16*	18x18*		
øA pass./bore	22	22	22	22	22	22	22		
øB tubo/pipe	16	16	16	18	18	18	18		
øC mm	12	14	16	12	14	16	18		

ART. G.0401W IN•GAS•DOPPIO

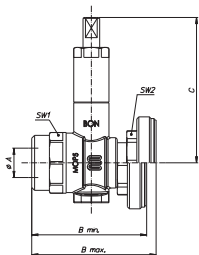


Rubinetto da incasso, con **doppia uscita**, ispezionabile come da norma UNI CIG 7129, leva e rosone **satinati-metallizzati** attacchi a saldare per tubo rame.

Built-in valve with **double outlet** with checking point, **silver satined** lever-shield-weld fittings for copper pipe.

SIZE mm18	14x12*	14x14*	16x12*	16x14*	16x16*				
øA pass./bore	18	18	18	18	18				
øB tubo/pipe	14	14	16	16	16				
øC mm	12	14	12	14	16				
SIZE mm22	16x12*	16x14*	16x16*	18x12*	18x14*	18x16*	18x18*		
øA pass./bore	22	22	22	22	22	22	22		
øB tubo/pipe	16	16	16	18	18	18	18		
øC mm	12	14	16	12	14	16	18		

ART. G.A401 IN•GAS•DOPPIO

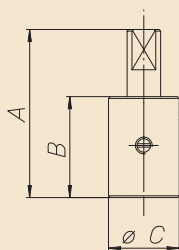


Solo rubinetto maschio/maschio a sfera per gas combustibili da incasso con doppia uscita.

Built-in ball valve only for fuel gas, male/male, with double outlet.

SIZE	1**								
øA pass./bore	17,5								
B min. mm	68,5								
B max. mm	74								
C mm	87								
SW1	34								
SW2	36								

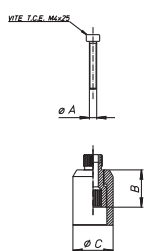
ART. G.A989 IN•GAS•DOPPIO



Prolunga da mm 30 con vite, per perno, cromata per art. G0400.
30 mm extension with screw, for spindle/stem, chrome-plated for art. G0400.

SIZE	mm 30								
A	50								
B	30								
øC mm	21								

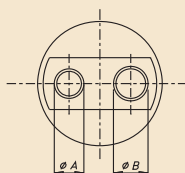
ART. G.0410 IN•GAS•DOPPIO



Prolunga da mm 18 con vite, per perno, cromata per art. G0400 e G0401.
18 mm extension with screw, for spindle/stem, chrome-plated for art. G0400 and G0401.

SIZE	1/2"-3/4"-1"								
øA	M 4								
B	19,5								
øC mm	21								

ART. G.0941 IN•GAS•DOPPIO



Codolo in bronzo con **doppia uscita** per Ingas G0401.
Bronze fitting nut with **double outlet** for Ingas G0401.

SIZE	14+12	14+14	16+12	16+14	16+16	18+12	18+14	18+16	18+18
øA pass./bore	14	14	16	16	16	18	18	18	18
øB mm	12	14	12	14	16	12	14	16	18

IN • GAS • DOPPIO

Rubinetto a sfera per gas combustibili da incasso con doppia uscita

Built-in ball valve for fuel gas with double outlet



G.0412C



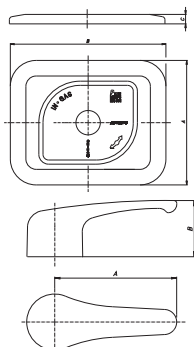
G.0412H



G.0412I



G.0412W



SIZE																			
A	120																		
B	150																		
C	10																		
SIZE																			
A	85																		
B	39,5																		

Leva e rosone per IN GAS G0400 e G0401.
Covering plate and handle for IN GAS G0400 and G0401.