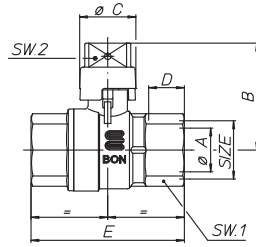


### ART. S.0251 OMEGA

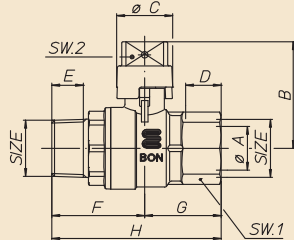
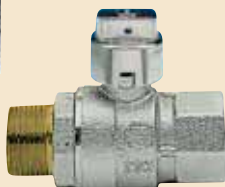


Valvola a sfera due femmine a passaggio totale con cappuccio di piombatura, nichelata.

Full bore ball valve for fuel gas with lockable rectangular head, female/female, nickel-plated.

SIZE	1/2"	3/4"	1"	1 1/4"	1 1/2"	2"	2 1/2"	3"		
øA pass./bore	15	20	25	32	40	50	65	80		
B mm	39,5	49	53,5	69,5	75,5	92,5	103,5	113,2		
øC mm	23	25,5	25,5	34,5	34,5	40,5	40,5	47		
D mm	15	16,3	19,1	21,4	21,4	25,7	30,2	33,3		
E mm	59,5	70	83	98,5	108	130	158	182,5		
SW1 mm	25	31	38	47	54	66	83	97		
SW2 mm	11	12	12	15	15	18	18	21		
Peso/Weight gr.	240	330	590	994	1526	2604	3430	-		

### ART. S.0252 OMEGA

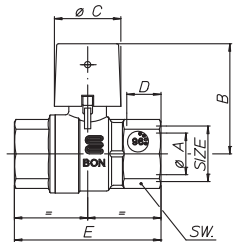


Valvola a sfera maschio/femmina a passaggio totale con cappuccio di piombatura, nichelata.

Full bore ball valve with lockable rectangular head, male/female, nickel-plated.

SIZE	1/2"	3/4"	1"	1 1/4"	1 1/2"	2"				
øA pass./bore	15	20	25	32	40	50				
B mm	39,5	49	53,5	69,5	75,5	92,5				
øC mm	23	25,5	25,5	34,5	34,5	40,5				
D mm	15	16,3	19,1	21,4	21,4	25,7				
E mm	13,2	14,5	16,8	19,1	19,1	23,4				
F mm	37,25	41	47,4	54	59,6	71,6				
G mm	29,75	35	41,6	49	53,9	64,9				
H mm	67	76	89	103	113,5	136,5				
SW1 mm	25	31	38	47	54	66				
SW2 mm	11	12	12	15	15	18				
Peso/Weight gr.	244	361	595	1019	1576	2631				

### ART. S.0257 OMEGA

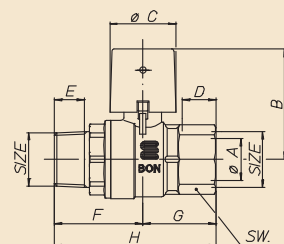


Valvola a sfera due femmine a passaggio totale con cappuccio giallo piombabile, per colonne montanti GAS, nichelata.

Full bore ball valve with lockable rectangular head and yellow plastic cap, female/female, nickel-plated.

SIZE	3/4"	1"	1 1/4"	1 1/2"	2"	2 1/2"				
øA pass./bore	20	25	32	40	50	65				
B mm	52,5	57	73	79	96	107				
øC mm	31,5	31,5	40,5	40,5	47,5	47,5				
D mm	16,3	19,1	21,4	21,4	25,7	30,2				
E mm	70	83	98,5	108	130	158				
SW mm	31	38	47	54	66	83				
Peso/Weight gr.	340	600	1006	1538	2618	3312				

### ART. S.0258 OMEGA



Valvola a sfera maschio/femmina a passaggio totale con cappuccio giallo piombabile, per colonne montanti GAS, nichelata.

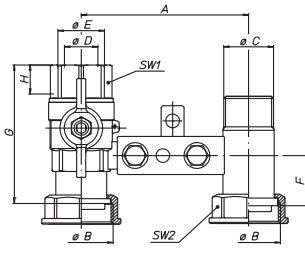
Full bore ball valve with lockable rectangular head and yellow plastic cap, male/female, nickel-plated.

SIZE	3/4"	1"	1 1/4"	1 1/2"	2"					
øA pass./bore	20	25	32	40	50					
B mm	52,5	57	73	79	96					
øC mm	31,5	31,5	40,5	40,5	47,5					
D mm	16,3	19,1	21,4	21,4	25,7					
E mm	14,5	16,8	19,1	19,1	23,4					
F mm	41	47,4	54	59,6	71,6					
G mm	35	41,6	49	53,9	64,9					
H mm	76	89	103	113,5	136,5					
SW mm	31	38	47	54	66					
Peso/Weight gr.	390	605	1031	1588	2645					

# OMEGA

Valvola a sfera a passaggio totale per gas combustibili serie pesante  
Full bore ball valve for fuel gas heavy series

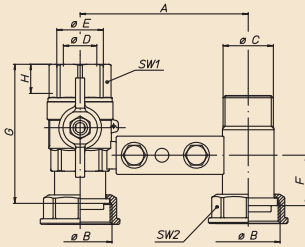
## ART. S.0260 OMEGA



Mensola a sfera per contatore gas interasse 110mm con zanca per fischer, con farfalla, sabbciata.  
Complete bracket for gas meter Ø 110 mm axle base, for Fischer mounting.

SIZE	¾"x1"¼	1"x1"¼							
A mm	110	110							
øB mm	1"¼	1"¼							
øC mm	1"	1"							
øD pass./bore	17,5	22							
øE mm	¾"	1"							
F mm	32,5	32,5							
G mm	73	92							
H mm	16,2	19,1							
SW1 mm	31	38							
SW2 mm	46	46							
Peso/Weight gr.	835	1005							

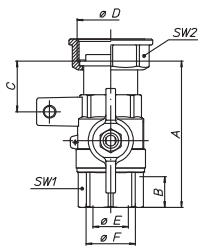
## ART. S.0262 OMEGA



Mensola a sfera per contatore gas interasse 110mm con zanca da murare, con farfalla, sabbciata.  
Complete bracket for gas meter Ø 110 mm axle base.

SIZE	¾"x1"¼	1"x1"¼							
A mm	110	110							
øB	1"¼	1"¼							
øC	1"	1"							
øD pass./bore	17,5	22							
øE	¾"	1"							
F mm	32,5	32,5							
G mm	73	92							
H mm	16,2	19,1							
SW1 mm	31	38							
SW2 mm	46	46							
Peso/Weight gr.	841	1011							

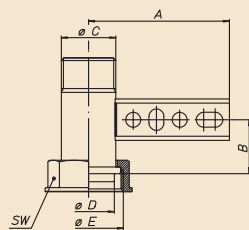
## ART. S.0263 OMEGA



Valvola a sfera femmina per contatore gas, con farfalla, sabbciata.  
Ball valve for gas meter, female, with T-handle.

SIZE	¾"x1"¼	1"x1"¼							
A mm	73	91							
B mm	16,2	19,1							
C mm	32,5	31,5							
øD	1"¼	1"¼							
øE pass./bore	17,5	22							
øF mm	¾"	¾"							
SW1 mm	31	38							
SW2 mm	46	46							
Peso/Weight gr.	479	631							

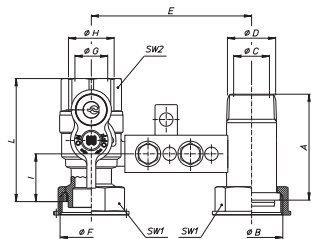
## ART. S.0264 OMEGA



Cannotto con traversa per mensole a sfera per contatori gas, interasse 110mm, zincato.  
Tube with crossbar for gas meter brackets, 110 mm axle base, zinc-plated.

SIZE	¾"x1"¼	1"x1"¼							
A mm	85	85							
B mm	32,5	32,5							
øC	¾"	1"							
øD	1"¼	1"¼							
øE									
SW mm	46	46							
Peso/Weight gr.	276	284							

### ART. S.0265 OMEGA

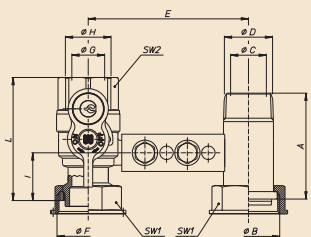


Mensola a sfera con serratura di morosità per contatore gas, interasse 110mm con zanca per fischer, con farfalla, sabbata.

Complete bracket for gas meter, 110 mm axle base, for fischer mounting, with key-locking device.

SIZE	3/4"x1-1/4"	1"x1-1/4"						
A mm	71	71						
ØB	1" 1/4	1" 1/4						
ØC mm	23,5	24						
ØD	3/4"	1"						
E	110	110						
ØF	1" 1/4	1" 1/4						
ØG mm	16	22						
ØH	3/4"	1"						
I	32	32						
L	75,5	82,5						
SW1-2 mm	45-31	45-38						

### ART. S.0266 OMEGA

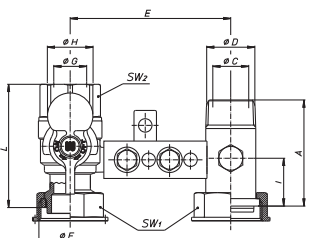


Mensola a sfera con serratura di morosità per contatore gas, interasse 110mm con zanca da murare, con farfalla, sabbata.

Complete bracket for gas meter, 110 mm axle base, with key-locking device.

SIZE	3/4"x1-1/4"	1"x1-1/4"						
A mm	71	71						
ØB	1" 1/4	1" 1/4						
ØC mm	23,5	24						
ØD	3/4"	1"						
E	110	110						
ØF	1" 1/4	1" 1/4						
ØG mm	16	22						
ØH	3/4"	1"						
I	32	32						
L	75,5	82,5						
SW1-2 mm	45-31	45-38						

### ART. R.1142 OMEGA

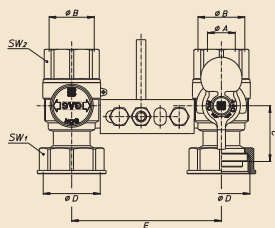
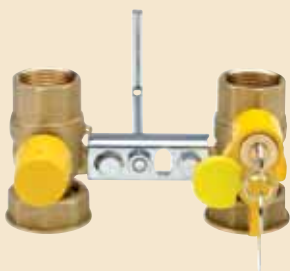


Mensola a sfera con serratura di morosità per contatore gas, interasse 110mm con zanca da murare, con presa da 1/4", con farfalla, sabbata.

Complete bracket for gas meter, 110 mm axle base, with key-locking device, with 1/4" port.

SIZE	1"x1-1/4"							
A mm	71							
ØB	1" 1/4							
ØC mm	24							
ØD	1"							
E mm	110							
ØF	1" 1/4							
ØG mm	22							
ØH	1"							
I mm	32							
L mm	82,5							
SW1-2 mm	45-38							

### ART. R.0074 OMEGA



Mensola con doppia valvola, con serratura di morosità e cappuccio piombabile, interasse 110mm, sabbata.

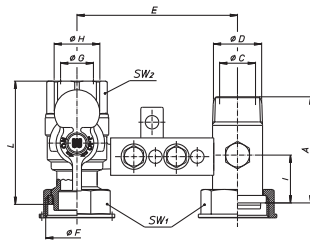
Complete bracket for gas meter with double valve, with key-locking device, sealable cap, 110 mm axle base.

SIZE	1"x1-1/4"							
ØA pass./bore	22							
ØB	1"							
ØC mm	31							
ØD	1" 1/4							
E mm	65							
F mm	82,5							
G mm	4							
H mm	41							
ØI	1"							
ØL	1" 1/4							
M mm	110							

# OMEGA

Valvola a sfera a passaggio totale per gas combustibili serie pesante  
Full bore ball valve for fuel gas heavy series

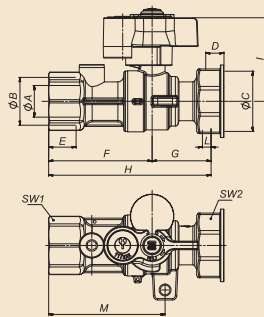
## ART. R.1182 OMEGA



Mensola a sfera con serratura di morosità per contatore gas, interasse 110mm con zanca per fischer, rapido di presa pressione, con farfalla, sabbiata.  
Complete bracket for gas meter  $\varnothing$  110 mm for fischer mounting, with key-locking device, quick plug connection.

SIZE	1" x 1 1/4"								
A mm	71								
$\varnothing$ B	1" 1/4								
$\varnothing$ C mm	24								
$\varnothing$ D	1"								
E mm	110								
$\varnothing$ F	1" 1/4								
$\varnothing$ G mm	22								
$\varnothing$ H	1"								
I mm	32								
L mm	82,5								
SW1-2 mm	45-38								

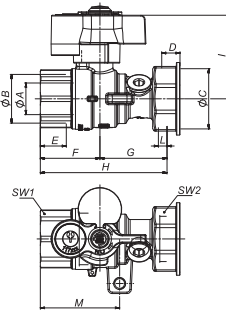
## ART. R.1058 OMEGA



Valvola a sfera per contatore gas, con serratura, sabbiata, con presa da 1/4" a valle della sfera.  
Ball valve for gas meter, with locking device, with 1/4" port downstream the ball.

SIZE	1" x 1 1/4"								
$\varnothing$ A mm	22								
$\varnothing$ B	1"								
$\varnothing$ C	1" 1/4								
D mm	12,7								
E mm	19,1								
F mm	72								
G mm	41								
H mm	113								
I mm	58								
L mm	6								
M mm	81								
SW1	38								
SW2	45								

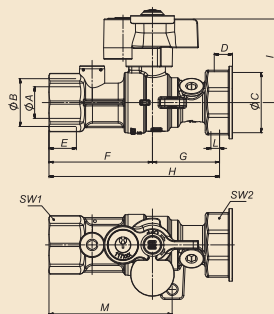
## ART. R.1114 OMEGA



Valvola a sfera per contatore gas, con serratura, sabbiata, con presa da 1/4" a monte della sfera.  
Ball valve for gas meter, with locking device, with 1/4" port upstream the ball.

SIZE	1" x 1 1/4"								
$\varnothing$ A mm	22								
$\varnothing$ B	1"								
$\varnothing$ C	1" 1/4								
D mm	12,7								
E mm	19,1								
F mm	41,5								
G mm	46,5								
H mm	88								
I mm	6								
L mm	55								
SW1	38								
SW2	45								

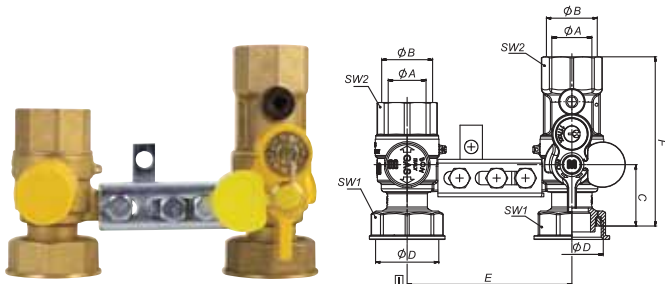
## ART. R.1116 OMEGA



Valvola a sfera per contatore gas, con serratura, sabbiata, con presa da 1/4" a monte e a valle della sfera.  
Ball valve for gas meter, with locking device, with 1/4" port upstream and downstream the ball.

SIZE	1" x 1 1/4"								
$\varnothing$ A mm	22								
$\varnothing$ B	1"								
$\varnothing$ C	1" 1/4								
D mm	12,7								
E mm	19,1								
F mm	72								
G mm	45,5								
H mm	118,5								
I mm	58								
L mm	6								
M mm	86								
SW1	38								
SW2	45								

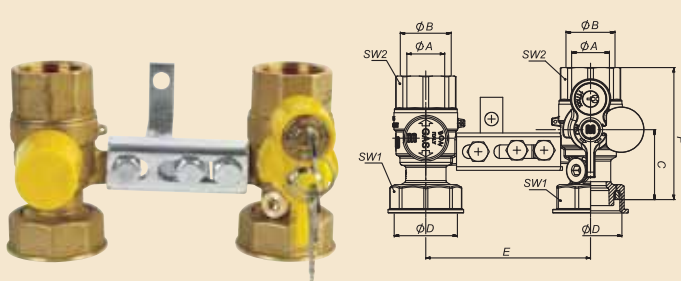
### ART. S.1279 OMEGA



Mensola a doppia valvola con serratura e cappuccio piombabile, presa di pressione da 1/4" a valle della sfera, sabbata.  
Complete bracket for gas meter, with locking device and lockable plastic head, 1/4" port downstream ball.

SIZE	1"x1/4"						
$\phi A$ mm	22						
$\phi B$	1"						
C mm	46,5						
$\phi D$	1"1/4						
E mm	110						
F mm	130						
SW1	45						
SW2	38						

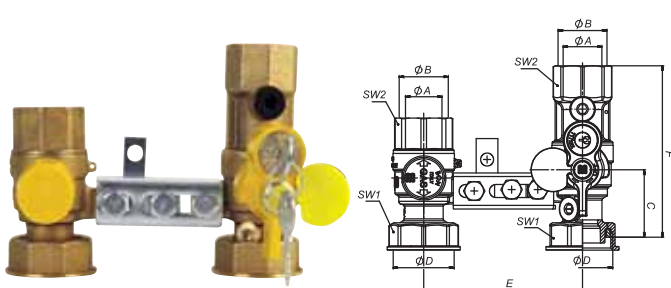
### ART. S.1281 OMEGA



Mensola a doppia valvola con serratura e cappuccio piombabile, presa di pressione da 1/4" a monte della sfera, sabbata.  
Complete bracket for gas meter, with locking device and lockable plastic head, 1/4" port upstream ball.

SIZE	1"x1/4"						
$\phi A$ mm	22						
$\phi B$	1"						
C mm	46,5						
$\phi D$	1"1/4						
E mm	110						
F mm	88						
SW1	45						
SW2	38						

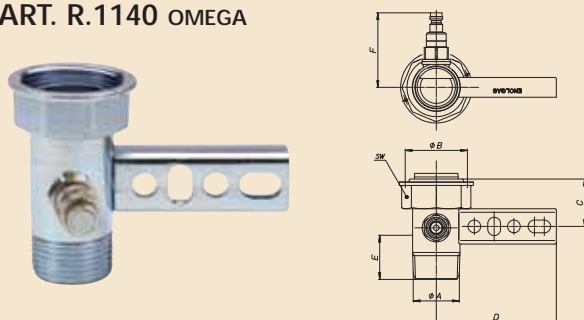
### ART. S.1283 OMEGA



Mensola a doppia valvola con serratura e cappuccio piombabile, presa di pressione da 1/4" a monte e a valle della sfera, sabbata.  
Complete bracket for gas meter, with locking device and plastic head, 1/4" ports upstream and downstream ball.

SIZE	1"x1/4"						
$\phi A$ mm	22						
$\phi B$	1"						
C mm	46,5						
$\phi D$	1"1/4						
E mm	110						
F mm	118,5						
SW1	45						
SW2	38						

### ART. R.1140 OMEGA



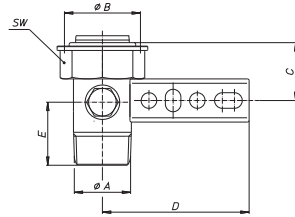
Canotto con traversa per mensole a sfera per contatori gas, interasse 110mm, rapido di presa pressione, zincato.  
Tube with crossbar for gas meter brackets, 110 mm axle base, quick plug connection, zinc-plated.

SIZE	1"x1/4"						
$\phi A$ pass./bore	1"						
$\phi B$	1"1/4						
C mm	32,5						
D mm	85						
E mm	36,5						
F mm	58						

# OMEGA

Valvola a sfera a passaggio totale per gas combustibili serie pesante  
Full bore ball valve for fuel gas heavy series

## ART. R.1141 OMEGA

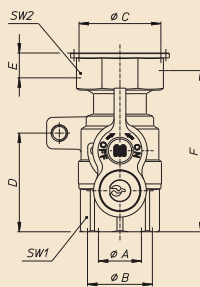


Cannotto con traversa per mensola a sfera per contatori gas, interasse 110mm, con presa 1/4", zincato.

Tube with crossbar for gas meter brackets, 110 mm axle base, with 1/4" port, zinc-plated.

SIZE	1" x 1" 1/4								
øA pass./bore	1"								
øB	1" 1/4								
C mm	32,5								
D mm	85								
E mm	36,5								
SW mm	46								

## ART. S.0268 OMEGA

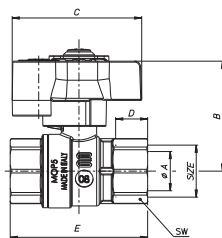


Valvola a sfera femmina per contatore gas con serratura di morosità con farfalla, sabbata.

Ball valve for gas meter, female, with key-locking device.

SIZE	3/4" x 1" 1/4	1" x 1" 1/4							
ø A mm	17,5	22							
øB	3/4"	1"							
øC	1" 1/4	1" 1/4							
øD mm	32,5	50,5							
E mm	12,7	12,7							
F mm	73	82,5							
SW1 mm	31	38							
SW2 mm	45	45							
Peso/Weight gr.	610	650							

## ART. S.3269 OMEGA

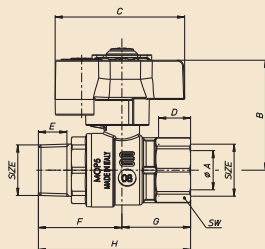


Valvola a sfera due femmine a passaggio totale per gas combustibili con serratura di morosità, con farfalla, nichelata.

Full bore ball valve for fuel gas, female/female, with key-locking device, with T-handle, nickel-plated.

SIZE	3/4"	1"							
A mm	20	25							
B mm	56	60							
C mm	66	66							
D mm	16,3	19,1							
E mm	73,5	86,5							
SW mm	31	38							

## ART. S.3278 OMEGA

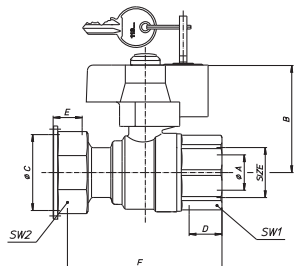


Valvola a sfera maschio/femmina a passaggio totale per gas combustibili con serratura di morosità, con farfalla, nichelata.

Full bore ball valve for fuel gas, male/female, with key-locking device, with T-handle, nickel-plated.

SIZE	3/4"	1"							
A mm	20	25							
B mm	56	60							
C mm	66	66							
D mm	16,3	19,1							
E mm	14,5	16,8							
F mm	42,5	47,5							
G mm	35	41,5							
H mm	77,5	89							
SW mm	31	38							

### ART. S.3284 OMEGA

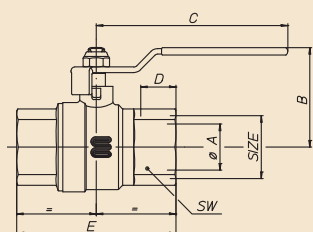


Valvola a sfera femmina/girello a passaggio totale per gas combustibili con serratura di morosità, con farfalla, sabbata.

Full bore ball valve for fuel gas, female/nut, with key-locking device, with T-handle, nickel-plated.

SIZE	¾" x 1¼"	1" x 1¼"								
øA pass./bore	17,5	22								
B mm	54	58								
øC	1"¼	1"¼								
D mm	16,2	19,1								
E mm	12,7	12,7								
F	73	82,5								
SW1 mm	31	38								
SW2 mm	45	45								

### ART. S.0271 OMEGA

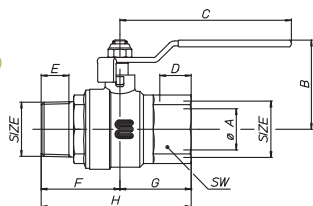


Valvola a sfera due femmine a passaggio totale per gas combustibili con leva in acciaio gialla, nichelata.

Full bore ball valve for fuel gas with steel lever, female/female, nickel-plated.

SIZE	¼"	¾"	½"	¾"	1"	1¼"	1½"	2"	2½"	3"	4"
øA pass./bore	10	10	15	20	25	32	40	50	65	80	100
B mm	37	37	41,7	49,8	53,8	63,2	72	83,7	99,5	113,2	139
C mm	90	90	90	105	105	120	140	170	170	250	250
D mm	11	11,4	15	16,3	19,1	21,4	21,4	25,7	30,2	33,3	39,3
E mm	47,5	49,5	65	73,5	86,5	101,5	115,5	132,5	158	182,5	219
SW mm	17	21	26	32	39	48	55	68	83	97	124
Peso/Weight gr.	138	151	257	392	618	1040	1607	2716	3497	5665	10508

### ART. S.0272 OMEGA

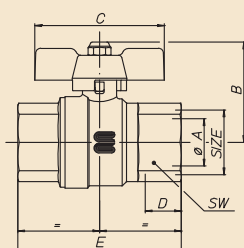
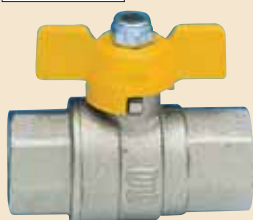


Valvola a sfera maschio/femmina a passaggio totale per gas combustibili con leva in acciaio gialla, nichelata.

Full bore ball valve for fuel gas with steel lever, male/female, nickel-plated.

SIZE	¼"	¾"	½"	¾"	1"	1¼"	1½"	2"		
øA pass./bore	10	10	15	20	25	32	40	50		
B mm	37	37	41,7	49,8	53,8	63,2	72	83,7		
C mm	90	90	90	105	105	120	140	170		
D mm	11	11,4	15	16,3	19,1	21,4	21,4	25,7		
E mm	9,7	10,1	13,2	14,5	16,8	19,1	19,1	23,4		
F mm	30,75	31,25	38	42,25	47,75	54,25	60,25	72,75		
G mm	23,75	24,75	32,5	36,75	43,25	50,75	55,75	66,25		
H mm	54,5	56	70,5	79	91	105	116	139		
SW mm	17	21	26	32	39	48	55	68		
Peso/Weight gr.	153	167	261	408	623	1065	1657	2752		

### ART. S.0277 OMEGA



Valvola a sfera due femmine a passaggio totale per gas combustibili con farfalla gialla, nichelata.

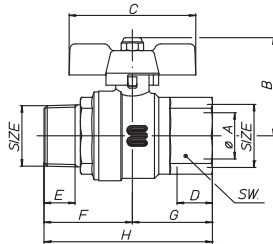
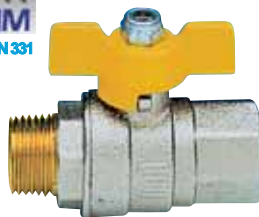
Full bore ball valve for fuel gas with T-handle, female/female, nickel-plated.

SIZE	¼"	¾"	½"	¾"	1"					
øA pass./bore	10	10	15	20	25					
B mm	35	35	40,5	49,5	54					
C mm	52	52	52	65	65					
D mm	11	11,4	15	16,3	19,1					
E mm	47,5	49,5	65	73,5	86,5					
SW mm	17	21	26	32	39					
Peso/Weight gr.	115	128	235	358	584					

# OMEGA

Valvola a sfera a passaggio totale per gas combustibili serie pesante  
Full bore ball valve for fuel gas heavy series

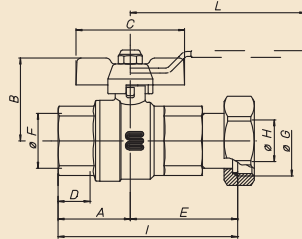
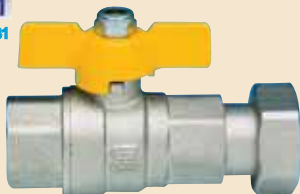
## ART. S.0278 OMEGA



Valvola a sfera maschio/femmina a passaggio totale per gas combustibili con farfalla gialla, nichelata.  
Full bore ball valve for fuel gas with T-handle, male/female, nickel-plated.

SIZE	¼"	¾"	½"	¾"	1"				
ØA pass./bore	10	10	15	20	25				
B mm	35	35	40,5	49,5	54				
C mm	52	52	52	65	65				
D mm	11	11,4	15	16,3	19,1				
E mm	9,7	10,1	13,2	14,5	16,8				
F mm	30,75	31,25	38	42,25	47,75				
G mm	23,75	24,75	32,5	36,75	43,25				
H mm	54,5	56	70,5	79	91				
SW mm	17	21	26	32	39				
Peso/Weight gr.	130	144	239	374	589				

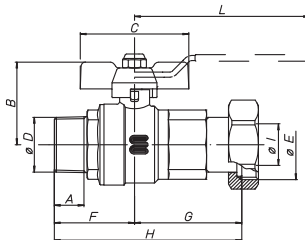
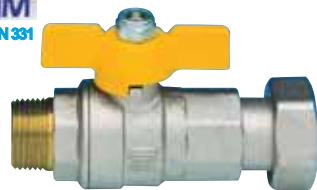
## ART. S.0284 OMEGA



Valvola a sfera a passaggio totale per gas combustibili fil. femmina con farfalla o leva per contatori, nichelata.  
Full bore ball valve for fuel gas with T-handle or steel lever, female/nut, nickel-plated.

SIZE	½"x¾"	¾"x1"	¾"x1¼"	1"x1¼"	1¼"x1½"	1½"x2"			
A mm	32,5	36,75	36,75	43,25	50,75	55,75			
B mm	41,7	49,8	49,8	53,8	63,2	72			
C mm	52	65	31	65	-	-			
D mm	15	16,3	16,3	19,1	21,4	21,4			
E mm	48	53,25	61,75	65,25	74,25	92,25			
Ø F	½"	¾"	¾"	1"	1¼"	1½"			
Ø G	¾"	1"	1¼"	1¼"	1½"	2"			
Ø H mm	-	-	31	31	-	46,5			
I mm	65,5	90	98,5	108,5	125	148			
L mm	-	-	-	-	120	140			
Peso/Weight gr.	314	488	525	765	1271	2062			

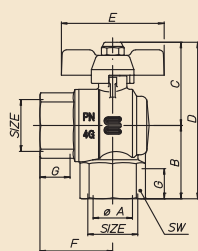
## ART. S.0285 OMEGA



Valvola a sfera a passaggio totale per gas combustibili fil. maschio con farfalla o leva per contatori, nichelata.  
Full bore ball valve for fuel gas with T-handle or steel lever, male/nut, nickel-plated.

SIZE	½"x¾"	¾"x1"	¾"x1¼"	1"x1¼"	1¼"x1½"	1½"x2"			
A mm	13,2	14,5	14,5	16,8	19,1	19,1			
B mm	41,7	49,8	49,8	53,8	63,2	72			
C mm	52	65	65	65	-	-			
Ø D	½"	¾"	¾"	1"	1¼"	1½"			
Ø E	¾"	1"	1¼"	1¼"	1½"	2"			
F mm	38	42,25	42,25	47,47	54,25	60,25			
G mm	48	53,25	61,75	65,25	74,25	92,25			
H mm	86	95,5	104	113	128,5	152,5			
Ø L mm	-	-	31	31	-	46,5			
L mm	-	-	-	-	120	140			
Peso/Weight gr.	318	504	541	770	1296	2112			

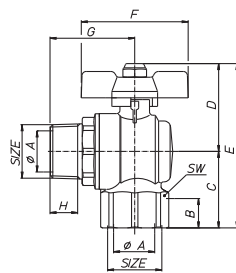
## ART. S.0286 OMEGA



Valvola a sfera per gas combustibili a passaggio totale femmina/femmina a squadra, con farfalla, nichelata.  
Angled full bore valve for fuel gas with T-handle, female/female, nickel-plated.

SIZE	½"x½"	¾"x¾"	1"x1"						
ØA pass./bore	15	20	25						
B mm	33	39	46,5						
C mm	39,5	48,5	53						
D mm	72,5	87,5	99,5						
E mm	52	65	65						
F mm	31,5	35	41,5						
G mm	15	16,3	19,1						
SW mm	26	32	39						
Peso/Weight gr.	196	335	504						

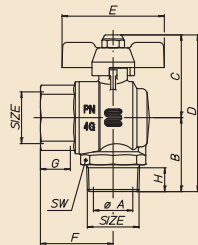
### ART. S.0287 OMEGA



Valvola a sfera per gas combustibili femmina/maschio a squadra passaggio totale, con farfalla, nichelata.  
Angled full bore ball valve for fuel gas with T-handle, male/female, nickel-plated.

SIZE	1/2"x1/2"	3/4"x3/4"	1"x1"					
øA pass./bore	15	20	25					
B mm	15	16,3	18,1					
C mm	33	39	46,5					
D mm	39,5	48,5	53					
E mm	72,5	87,5	99,5					
F mm	52	65	65					
G mm	38,5	44,5	51,5					
H mm	13,3	14,5	16,8					
SW mm	26	32	39					
Peso/Weight gr.	180	368	562					

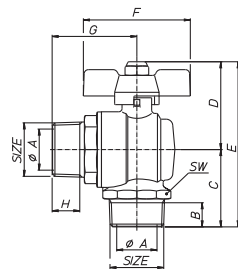
### ART. S.0288 OMEGA



Valvola a sfera a passaggio totale per gas combustibili maschio/femmina a squadra, con farfalla, nichelata.  
Angled full bore ball valve for fuel gas with T-handle, male/female, nickel-plated.

SIZE	1/2"x1/2"	3/4"x3/4"	1"x1"					
øA pass./bore	15	20	25					
B mm	33,5	39,5	47					
C mm	39,5	48,5	53					
D mm	73	88	100					
E mm	52	65	65					
F mm	31,5	35	41,5					
G mm	15	16,3	19,1					
H mm	11,5	12,9	14,7					
SW mm	26	32	39					
Peso/Weight gr.	197	324	505					

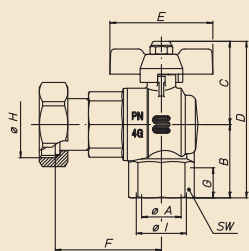
### ART. S.0289 OMEGA



Valvola a sfera per gas combustibili maschio/maschio a squadra passaggio totale, con farfalla, nichelata.  
Angled full bore ball valve for fuel gas with T-handle, male/female, nickel-plated.

SIZE	1/2"x1/2"	3/4"x3/4"	1"x1"					
øA pass./bore	15	20	25					
B mm	11,5	12,9	14,7					
C mm	33,5	39,5	47					
D mm	39,5	48,5	53					
E mm	73	88	100					
F mm	52	65	65					
G mm	38,5	44,5	51,5					
H mm	13,2	14,5	16,8					
SW mm	26	32	39					
Peso/Weight gr.	181	357	563					

### ART. S.0290 OMEGA



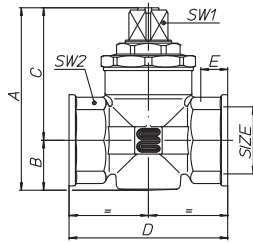
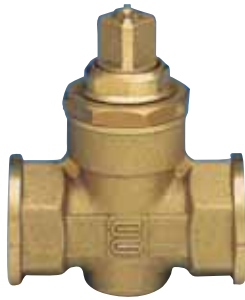
Valvola a sfera a passaggio totale per gas combustibili femmina, a squadra per contatore, con farfalla, nichelata.  
Angled full bore ball valve for fuel gas with T-handle, female/nut, nickel-plated.

SIZE	3/4"x1"	3/4"x1" 1/4	1"x1" 1/4					
øA pass./bore	20	20	25					
B mm	39	39	46,5					
C mm	48,5	48,5	53					
D mm	87,5	87,5	99,5					
E mm	65	65	65					
F mm	51,5	61	64,5					
G mm	16,3	16,3	19,1					
øH mm	20	20	25					
øI mm	3/4"	3/4"	1"					
SW mm	32	32	39					
Peso/Weight gr.	464	502	746					

# OMEGA

Valvola a sfera a passaggio totale per gas combustibili serie pesante  
Full bore ball valve for fuel gas heavy series

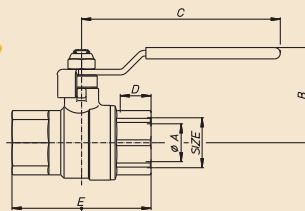
## ART. G.0055 OMEGA



Rubinetto a maschio conico femmina/femmina con quadro, sabbato.  
Tapered plug for fuel gas and water with square head, female/female.

SIZE	½"	¾"	1"	1¼"	1½"	2"				
A mm	64,5	73	85,5	102,5	109,75	127,5				
B mm	15,5	19	23	31	33,5	39,5				
C mm	49	54	62,5	71,5	76,25	88				
D mm	57	64	75	92	102	122				
E mm	9,7	11,2	12,7	13,7	15,7	17,7				
SW1 mm	12	12,5	14,5	19	19	24				
SW2 mm	25	31	38	47,5	54	66				
Peso/Weight gr.	235	367	553	908	1213	1769				

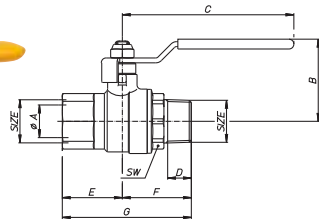
## ART. S.1101 OMEGA HTB



Valvola a sfera per gas combustibili, femmina/femmina con leva in acciaio, nichelata.  
Resistente alle alte temperature, secondo EN 1775.  
Ball valve for fuel gas with steel lever, female/female, nickel-plated. Resists  
high temperature, according to EN 1775.

SIZE	½"	¾"	1"							
øA pass./bore	15	20	25							
B mm	42	50	54,5							
C mm	90	105	105							
D mm	15	16,3	19,1							
E mm	64,5	73,5	86,5							
SW mm	26	32	39							

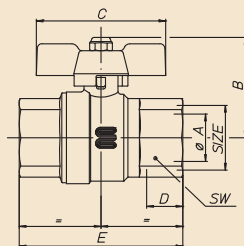
## ART. S.1102 OMEGA HTB



Valvola a sfera per gas combustibili, maschio/femmina con leva in acciaio, nichelata.  
Resistente alle alte temperature, secondo EN 1775.  
Ball valve for fuel gas with steel lever, male/female, nickel-plated. Resists high  
temperature, according to EN 1775.

SIZE	½"	¾"	1"							
øA pass./bore	15	20	25							
B mm	42	50	54,5							
C mm	90	105	105							
D mm	13,2	14,5	16,8							
E mm	32,5	36,75	43,25							
F mm	38	42,25	47,75							
G mm	70,5	79	91							
SW mm	26	32	39							

## ART. S.1107 OMEGA HTB

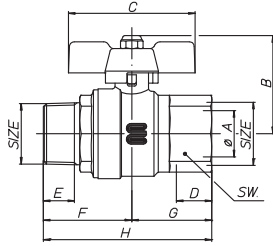
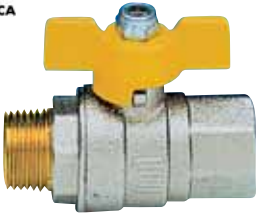


Valvola a sfera per gas combustibili, femmina/femmina con farfalla, nichelata.  
Resistente alle alte temperature, secondo EN 1775.  
Ball valve for fuel gas with T-handle, female/female, nickel-plated. Resists high  
temperature, according to EN 1775.

SIZE	½"	¾"	1"							
øA pass./bore	15	20	25							
B mm	40,5	49,5	54							
C mm	52	65	65							
D mm	15	16,3	19,1							
E mm	65	73,5	86,5							
SW mm	26	32	39							
Peso/Weight gr.	235	358	584							

**ART. S.1108 OMEGA HTB**

**ADVANTICA**



Valvola a sfera per gas combustibili, maschio/femmina con farfalla, nichelata.  
Resistente alle alte temperature, secondo **EN 1775**.  
Ball valve for fuel gas with T-handle, male/female, nickel-plated. Resists high temperature, according to **EN 1775**.

SIZE	1/2"	3/4"	1"						
øA pass./bore	15	20	25						
B mm	40,5	49,5	54						
C mm	52	65	65						
D mm	15	16,3	19,1						
E mm	13,2	14,5	16,8						
F mm	38	42,25	47,75						
G mm	32,5	36,75	43,25						
H mm	70,5	79	91						
SW mm	26	32	39						
Peso/Weight gr.	239	374	589						