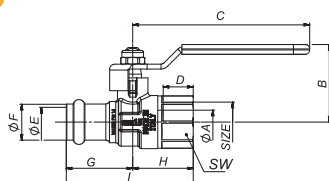


TOP • GAS • PRESS

Valvola a sfera per gas combustibili con connessione press joint
Full bore ball valve for fuel gas with press joint connection

ART. S.3121 TOP•GAS•PRESS

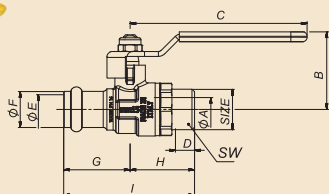


Valvola a sfera a passaggio totale con connessione a pressare/femmina, nichelata con leva in ferro.

Full bore ball valve with press joint connection/female, nickel-plated with steel handle.

SIZE	1/2"x15mm	3/4"x18mm	3/4"x22mm	1"x28mm
øA pass./bore	12,5	15	20	25
B mm	39,5	47,5	47,5	51,5
C mm	90	90	105	105
D mm	15	16,3	16,3	19,1
øE mm	15,3	18,3	22,3	18,3
øF mm	18,4	21,4	25,4	31,4
G mm	33,8	39,25	44,5	48,1
H mm	30,75	34,25	35	41,4
I mm	64,55	73,5	79,5	89,5
SW	25	31	31	38

ART. S.3122 TOP•GAS•PRESS

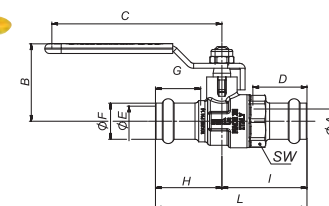


Valvola a sfera a passaggio totale con connessione a pressare/maschio, nichelata con leva in ferro.

Full bore ball valve with press joint connection/male, nickel-plated with steel handle.

SIZE	1/2"x15mm	3/4"x18mm	3/4"x22mm	1"x28mm
øA pass./bore	12,5	15	20	25
B mm	39,5	47,5	47,5	51,5
C mm	90	90	105	105
D mm	13,2	15,7	14,5	16,8
øE mm	15,3	18,3	22,3	28,3
øF mm	18,4	21,4	25,4	31,4
G mm	33,8	39,25	44,5	48,1
H mm	36,75	39,75	42,5	47,4
I mm	70,55	79	87	95,5
SW mm	25	28	32	39

ART. S.3123 TOP•GAS•PRESS

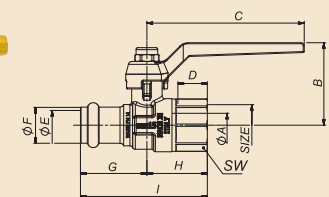
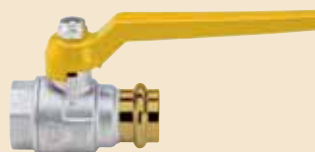


Valvola a sfera a passaggio totale con connessione a pressare/connessione a pressare, nichelata con leva in ferro.

Full bore ball valve with press joint connection/press joint connection, nickel-plated with steel handle.

SIZE	1/2"x15mm	3/4"x18mm	3/4"x22mm	1"x28mm
øA pass./bore	12,5	15	20	25
B mm	39,5	47,5	47,5	51,5
C mm	90	90	105	105
D mm	27,5	35,5	39,5	38,5
øE mm	15,3	18,3	22,3	28,3
øF mm	18,4	21,4	25,4	31,4
G mm	23	27	29	29
H mm	33,8	39,25	44,5	48,1
I mm	43,25	51,25	58	59,9
L mm	77,05	90,5	102,5	108
SW mm	25	28	33	39

ART. S.3124 TOP•GAS•PRESS

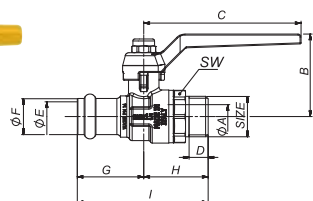


Valvola a sfera a passaggio totale con connessione a pressare/femmina, nichelata con leva in alluminio.

Full bore ball valve with press joint connection/female, nickel-plated with aluminum handle.

SIZE	1/2"x15mm	3/4"x18mm	3/4"x22mm	1"x28mm
øA pass./bore	12,5	15	20	25
B mm	40	49,5	49,5	53,5
C mm	95	95	115	115
D mm	15	16,3	16,3	19,1
øE mm	15,3	18,3	22,3	28,3
øF mm	18,4	21,4	25,4	31,4
G mm	33,8	39,25	44,5	48,1
H mm	30,75	34,25	35	41,4
I mm	64,55	73,5	79,5	89,5
SW mm	25	31	31	38

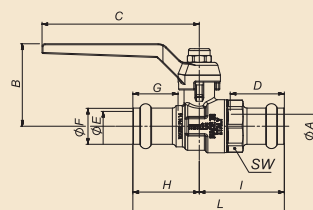
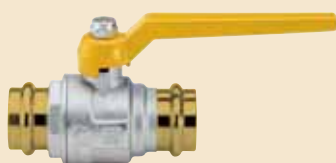
ART. S.3125 TOP•GAS•PRESS



Valvola a sfera a passaggio totale con connessione a pressare/maschio, nichelata con leva in alluminio.
Full bore ball valve with press joint connection/male, nickel-plated with aluminium handle.

SIZE	1/2"x15mm	3/4"x18mm	3/4"x22mm	1"x28mm					
øA pass./bore	12,5	15	20	25					
B mm	40	49,5	49,5	53,5					
C mm	95	95	115	115					
D mm	13,2	15,7	14,5	16,8					
øE mm	15,3	18,3	22,3	28,3					
øF mm	18,4	21,4	25,4	31,4					
G mm	33,8	39,25	44,5	48,1					
H mm	36,75	39,75	42,5	47,4					
I mm	70,55	79	87	95,5					
SW mm	25	28	32	39					

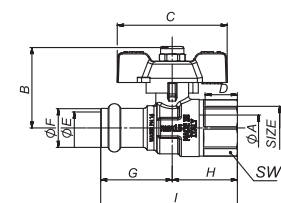
ART. S.3126 TOP•GAS•PRESS



Valvola a sfera a passaggio totale con connessione a pressare/connessione a pressare, nichelata con leva in alluminio.
Full bore ball valve with press joint connection/press joint connection, nickel-plated with aluminium handle.

SIZE	1/2"x15mm	3/4"x18mm	3/4"x22mm	1"x28mm					
øA pass./bore	12,5	15	20	25					
B mm	40	49,5	49,5	53,5					
C mm	95	95	115	115					
D mm	27,5	35,5	39,5	38,5					
øE mm	15,3	18,3	22,3	28,3					
øF mm	18,4	21,4	25,4	31,4					
G mm	23	27	29	29					
H mm	33,8	39,25	44,5	48,1					
I mm	43,25	51,25	58	59,9					
L mm	77,05	90,5	102,5	108					
SW mm	25	28	33	39					

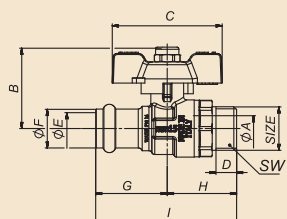
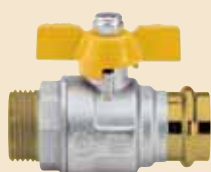
ART. S.3127 TOP•GAS•PRESS



Valvola a sfera a passaggio totale con connessione a pressare/femmina, nichelata con farfalla.
Full bore ball valve with press joint connection/female, nickel-plated T-handle.

SIZE	1/2"x15mm	3/4"x18mm	3/4"x22mm	1"x28mm					
øA pass./bore	12,5	15	20	25					
B mm	38	39,5	49	53,5					
C mm	52	52	65	65					
D mm	15	16,3	16,3	19,1					
øE mm	15,3	18,3	22,3	28,3					
øF mm	18,4	21,4	25,4	31,4					
G mm	33,8	39,25	44,5	48,1					
H mm	30,75	34,25	35	41,4					
I mm	64,55	73,5	79,5	89,5					
SW mm	25	31	31	38					

ART. S.3128 TOP•GAS•PRESS



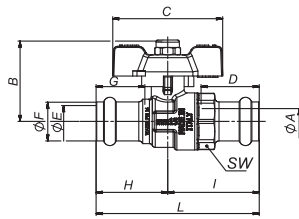
Valvola a sfera a passaggio totale con connessione a pressare/maschio, nichelata con farfalla.
Full bore ball valve with press joint connection/male, nickel-plated T-handle.

SIZE	1/2"x15mm	3/4"x18mm	3/4"x22mm	1"x28mm					
øA pass./bore	12,5	15	20	25					
B mm	38	39,5	49	53,5					
C mm	52	52	65	65					
D mm	13,2	15,7	14,5	16,8					
øE mm	15,3	18,3	22,3	28,3					
øF mm	18,4	21,4	25,4	31,4					
G mm	33,8	39,25	44,5	48,1					
H mm	36,75	39,75	42,5	47,4					
I mm	70,55	79	87	95,5					
SW mm	25	28	32	39					

TOP • GAS • PRESS

Valvola a sfera per gas combustibili con connessione press joint
Full bore ball valve for fuel gas with press joint connection

ART. S.3129 TOP•GAS•PRESS



Valvola a sfera a passaggio totale con connessione a pressare/connessione a pressare, nichelata con farfalla.

Full bore ball valve with press joint connection/press joint connection, nickel-plated with T-handle.

SIZE	1/2"x15mm	3/4"x18mm	3/4"x22mm	1"x28mm					
øA pass./bore	12,5	15	20	25					
B mm	39,5	39,5	49	53,5					
C mm	52	52	65	65					
D mm	27,5	35,5	39,5	38,5					
øE mm	15,3	18,3	22,3	28,3					
øF mm	18,4	21,4	25,4	31,4					
G mm	23	27	29	29					
H mm	33,8	39,25	44,5	48,1					
I mm	43,25	51,25	58	59,9					
L mm	77,05	90,5	102,5	108					
SW mm	25	28	33	39					