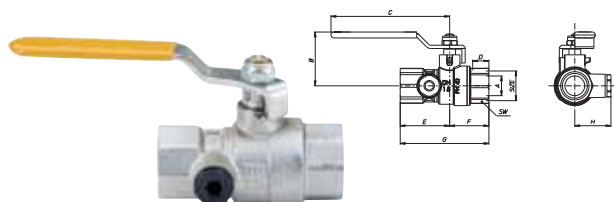


ART. S.1431 TOP•TEST

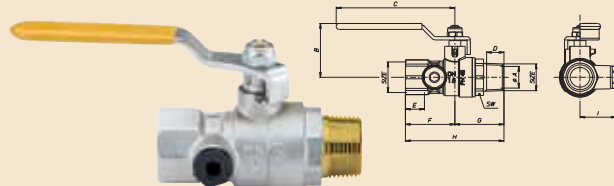


Valvola a sfera femmina/femmina per gas combustibili con leva ferro, nichelata, con presa di pressione da 1/4".

Ball valve for fuel gas female/female with steel handle, nickel-plated, with pressure gage 1/4".

SIZE	1/2"	3/4"	1"						
øA pass./bore	15	20	25						
B mm	41	49,5	53,5						
C mm	90	105	105						
D mm	15	16,3	19,1						
E mm	37,5	42	48,5						
F mm	29,75	35	41,5						
G mm	67,25	77	90						
H mm	28,5	31	34,5						
SW mm	25	31	38						

ART. S.1432 TOP•TEST

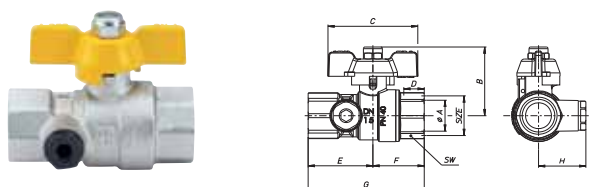


Valvola a sfera femmina/maschio per gas combustibili con leva ferro, nichelata, con presa di pressione da 1/4".

Ball valve for fuel gas female/male with steel handle, nickel-plated, with pressure gage 1/4".

SIZE	1/2"	3/4"	1"						
øA pass./bore	15	20	25						
B mm	41	49,5	53,5						
C mm	90	105	105						
D mm	9,7	10,7	11,7						
E mm	15	16,3	19,1						
F mm	37,5	42	48,5						
G mm	37,25	42,5	47,5						
H mm	74,75	84,5	96						
I mm	28,5	31	34,5						
SW mm	25	31	38						

ART. S.1437 TOP•TEST

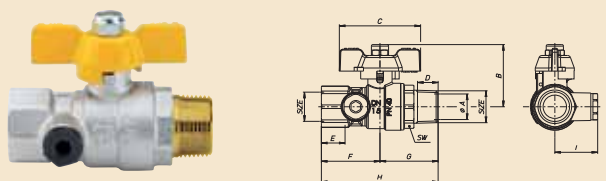


Valvola a sfera femmina/femmina per gas combustibili con con farfalla gialla, nichelata, con presa di pressione da 1/4".

Ball valve for fuel gas female/female with yellow T-handle, nickel-plated, with pressure gage 1/4".

SIZE	1/2"	3/4"	1"						
øA pass./bore	15	20	25						
B mm	40	49	53						
C mm	52	65	65						
D mm	15	16,3	19,1						
E mm	37,5	42	48,5						
F mm	29,75	35	41,5						
G mm	67,25	77	90						
H mm	28,5	31	34,5						
SW mm	25	31	38						

ART. S.1438 TOP•TEST



Valvola a sfera femmina/maschio per gas combustibili con con farfalla gialla, nichelata, con presa di pressione da 1/4".

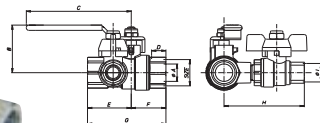
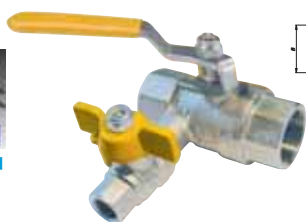
Ball valve for fuel gas female/male with yellow T-handle, nickel-plated, with pressure gage 1/4".

SIZE	1/2"	3/4"	1"						
øA pass./bore	15	20	25						
B mm	40	49	53						
C mm	52	65	65						
D mm	9,7	10,7	11,7						
E mm	15	16,3	19,1						
F mm	37,5	42	48,5						
G mm	37,25	42,5	47,5						
H mm	74,75	84,5	96						
I mm	28,5	31	34,5						
SW mm	25	31	38						

TOP • TEST

Valvola a sfera per gas combustibili a passaggio totale con presa di pressione
Full bore valve for fuel gas with pressure gage

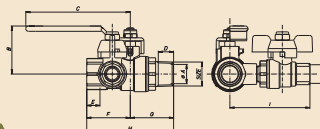
ART. S.1441 TOP•TEST



Valvola a sfera femmina/femmina per gas combustibili con leva ferro, nichelata, con valvola di presa da 1/4".
Ball valve for fuel gas female/female with steel handle, nickel-plated, with bypass valve 1/4".

SIZE	1/2"	3/4"	1"						
øA pass./bore	15	20	25						
B mm	41	49,5	53,5						
C mm	90	105	105						
D mm	15	16,3	19,1						
E mm	37,5	42	48,5						
F mm	29,75	35	41,5						
G mm	67,25	77	90						
H mm	69	71,5	75						
øI	1/4"	1/4"	1/4"						
SW mm	25	31	38						

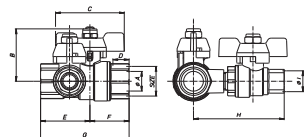
ART. S.1442 TOP•TEST



Valvola a sfera femmina/maschio per gas combustibili con leva ferro, nichelata, con valvola di presa da 1/4".
Ball valve for fuel gas female/male with steel handle, nickel-plated, with bypass valve 1/4".

SIZE	1/2"	3/4"	1"						
øA pass./bore	15	20	25						
B mm	41	49,5	53,5						
C mm	90	105	105						
D mm	9,7	10,7	11,7						
E mm	15	16,3	19,1						
F mm	37,5	42	48,5						
G mm	37,25	42,5	47,5						
H mm	74,75	84,5	96						
I mm	69	71,5	75						
øL	1/4"	1/4"	1/4"						
SW mm	25	31	38						

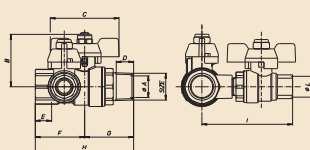
ART. S.1447 TOP•TEST



Valvola a sfera femmina/femmina per gas combustibili con con farfalla gialla, nichelata, con valvola di presa da 1/4".
Ball valve for fuel gas female/female with yellow T-handle, nickel-plated, with bypass valve 1/4".

SIZE	1/2"	3/4"	1"						
øA pass./bore	15	20	25						
B mm	40	49	53						
C mm	52	65	65						
D mm	15	16,3	19,1						
E mm	37,5	42	48,5						
F mm	29,75	35	41,5						
G mm	67,25	77	90						
H mm	69	71,5	75						
øI	1/4"	1/4"	1/4"						
SW mm	25	31	38						

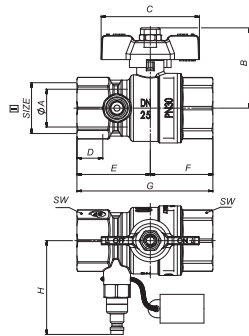
ART. S.1448 TOP•TEST



Valvola a sfera femmina/maschio per gas combustibili con con farfalla gialla, nichelata, con valvola di presa da 1/4".
Ball valve for fuel gas female/male with yellow T-handle, nickel-plated, with bypass valve 1/4".

SIZE	1/2"	3/4"	1"						
øA pass./bore	15	20	25						
B mm	40	49	53						
C mm	52	65	65						
D mm	9,7	10,7	11,7						
E mm	15	16,3	19,1						
F mm	37,5	42	48,5						
G mm	37,25	42,5	47,5						
H mm	74,75	84,5	96						
I mm	69	71,5	75						
øL	1/4"	1/4"	1/4"						
SW mm	25	31	38						

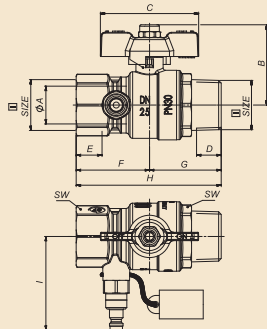
ART. S.1457 TOP•TEST



Valvola a sfera per gas combustibili f/f con rapido di presa pressione, nichelata.
Ball valve for fuel gas f/f with T-handle and quick plug connection.

SIZE	1/2"	3/4"	1"						
øA pass./bore	15	20	25						
B mm	40	49	53						
C mm	52	65	65						
D mm	15	16,3	19,1						
E mm	37,5	42	48,5						
F mm	29,75	35	41,5						
G mm	67,25	77	90						
H mm	56	58,5	62						
SW mm	25	31	38						

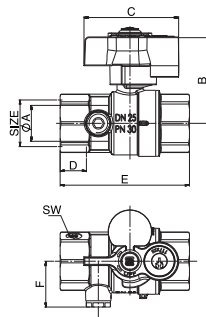
ART. S.1458 TOP•TEST



Valvola a sfera m/f con rapido di presa pressione, nichelata.
Ball valve for fuel gas m/f with T-handle and quick plug connection.

SIZE	1/2"	3/4"	1"						
ø A mm	15	20	25						
B mm	40	49	53						
C mm	52	65	65						
D mm	9,7	10,7	11,7						
E mm	15	16,3	19,1						
F mm	37,5	42	48,5						
G mm	37,25	42,5	47,5						
H mm	74,75	84,5	96						
I mm	56	58,5	62						
SW mm	25	31	38						

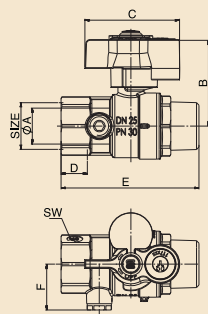
ART. S.1461 TOP•TEST



Valvola a sfera per gas combustibili f/f con serratura di morosità e presa pressione da 1/4", nichelata.
Ball valve for fuel gas f/f, with key locking device and pressure port 1/4".

SIZE	3/4"	1"							
ø A mm	20	25							
B mm	56	60							
C mm	66	66							
D mm	16,3	19,1							
E mm	77	90							
F mm	29	32							
SW mm	31	38							

ART. S.1462 TOP•TEST



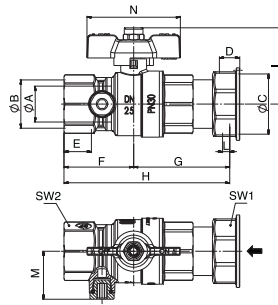
Valvola a sfera per gas combustibili m/f con serratura di morosità e presa pressione da 1/4", nichelata.
Ball valve for fuel gas m/f, with key locking device and pressure port 1/4".

SIZE	3/4"	1"							
ø A mm	20	25							
B mm	56	60							
C mm	66	66							
D mm	16,3	19,1							
E mm	84,5	96							
F mm	29	32							
SW mm	31	38							

TOP • TEST

Valvola a sfera per gas combustibili a passaggio totale con presa di pressione
Full bore valve for fuel gas with pressure gage

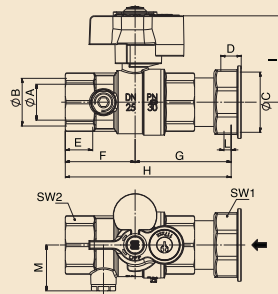
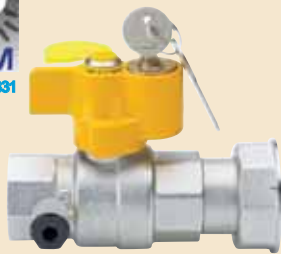
ART. S.1464 TOP•TEST



Valvola a sfera per gas combustibili f/girello con presa di pressione da 1/4", nichelata.
Ball valve for fuel gas f/nut with T- handle and pressure gage port 1/4".

SIZE	3/4"x1" 1/4	1"x1" 1/4							
ø A mm	20	25							
øB pass./bore	3/4"	1"							
øC pass./bore	1" 1/4	1" 1/4							
D mm	12,7	12,7							
E mm	16,3	19,1							
F mm	42	48,5							
G mm	63,5	67							
H mm	105,5	115,5							
I mm	49	53							
L mm	5	5							
M mm	31	34,5							
N mm	65	65							
SW1 mm	45	45							
SW2 mm	30	38							

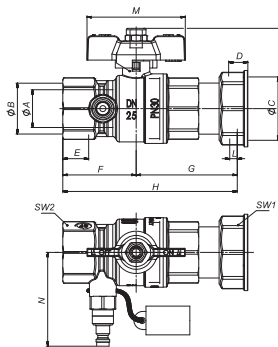
ART. S.1466 TOP•TEST



Valvola a sfera per gas combustibili f/girello con serratura di morosità con presa di pressione da 1/4", nichelata.
Ball valve for fuel gas f/nut with key locking device and pressure gage port 1/4".

SIZE	3/4"x1" 1/4	1"x1" 1/4							
ø A mm	20	25							
øB pass./bore	3/4"	1"							
øC pass./bore	1" 1/4	1" 1/4							
D mm	12,7	12,7							
E mm	16,3	19,1							
F mm	41,5	48,5							
G mm	62	67							
H mm	103,5	115,5							
I mm	56	60							
L mm	5	5							
M mm	29,9	31,9							
SW1 mm	45	45							
SW2 mm	31	38							

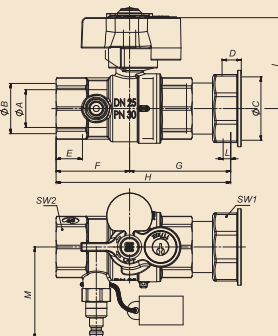
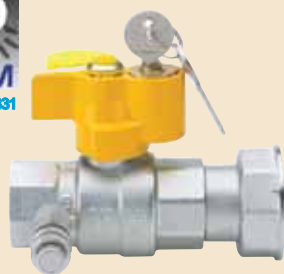
ART. S.1494 TOP•TEST



Valvola a sfera per gas combustibili f/girello con rapido di presa pressione, nichelata.
Ball valve for fuel gas f/nut with T-handle and quick plug connection.

SIZE	3/4"x1" 1/4	1"x1" 1/4							
ø A mm	20	25							
øB pass./bore	3/4"	1"							
øC pass./bore	1" 1/4	1" 1/4							
D mm	12,7	12,7							
E mm	16,3	19,1							
F mm	48,5	48,5							
G mm	67	67							
H mm	115,5	115,5							
I mm	53	53							
L mm	5	5							
M mm	65	65							
N mm	58,5	62							
SW1 mm	45	45							
SW2 mm	31	38							

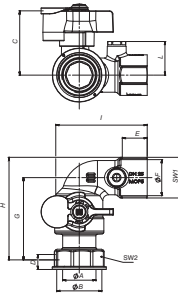
ART. S.1496 TOP•TEST



Valvola a sfera per gas combustibili f/girello con serratura di morosità con rapido di presa pressione, nichelata.
Ball valve for fuel gas f/nut with key locking device and quick plug connection.

SIZE	3/4"x1" 1/4	1"x1" 1/4							
ø A mm	20	25							
øB pass./bore	3/4"	1"							
øC pass./bore	1" 1/4	1" 1/4							
D mm	12,7	12,7							
E mm	16,3	19,1							
F mm	41,5	48,5							
G mm	62	67							
H mm	103,5	115,5							
I mm	56	60							
L mm	5	5							
M mm	58,5	56,5							
SW1 mm	45	45							
SW2 mm	31	38							

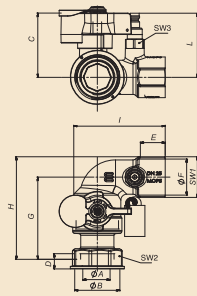
ART. S.1488 TOP•TEST



Valvola a sfera f/girello a squadra per gas combustibili con serratura di morosità e presa di pressione da 1/4" , nichelata.
Angle ball valve for fuel gas f/nut with key locking device and pressure gage port 1/4" .

SIZE	1"	1" 1/4							
ø A mm	20	25							
øB pass./bore	1"	1" 1/4							
C mm	56	60							
D mm	12,5	12,7							
E mm	16,3	19,1							
ø F	3/4"	1"							
G mm	77	77							
H mm	93	96							
I mm	78	85,5							
L mm	29	31,5							
SW1 mm	31	38							
SW2 mm	37	45							

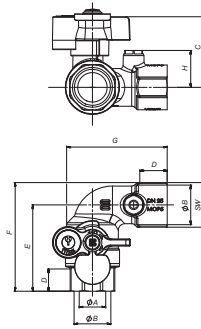
ART. S.1489 TOP•TEST



Valvola a sfera f/girello a squadra per gas combustibili con serratura di morosità e rapido di presa pressione,nichelata
Angle ball valve for fuel gas f/nut with key locking device and quick plug connection.

SIZE	3/4" x 1"	1" x 1 1/4"							
ø A mm	20	25							
øB pass./bore	1"	1" 1/4							
C mm	56	60							
D mm	12,5	12,7							
E mm	16,3	19,1							
øF	3/4"	1"							
G mm	77	77							
H mm	93	96							
I mm	78	85,5							
L mm	57,5	60							
SW1 mm	31	38							
SW2 mm	37	45							
SW3 mm	17	17							

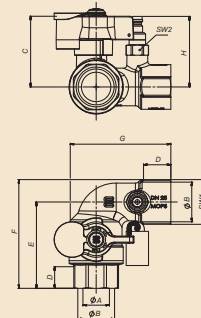
ART. S.1474 TOP•TEST



Valvola a sfera f/f a squadra per gas combustibili con serratura di morosità e presa di pressione da 1/4" , nichelata.
Angle ball valve for fuel gas f/f with key locking device and pressure gage port 1/4" .

SIZE	3/4"	1"							
ø A mm	20	25							
ø B	3/4"	1"							
C mm	56	60							
D mm	16,3	19,1							
E mm	67	73,5							
F mm	82,5	92,5							
G mm	78	85,5							
H mm	29	31,5							
SW mm	31	38							

ART. S.1475 TOP•TEST



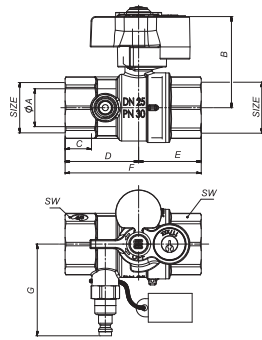
Valvola a sfera f/f a squadra per gas combustibili con serratura di morosità e rapido di presa pressione,nichelata
Angle ball valve for fuel gas f/f with key locking device and quick plug connection.

SIZE	3/4"	1"							
ø A mm	20	25							
ø B	3/4"	1"							
C mm	56	60							
D mm	16,3	19,1							
E mm	67	73,5							
F mm	82,5	92,5							
G mm	78	85,5							
H mm	57,5	60							
SW1 mm	31	38							
SW2 mm	17	17							

TOP • TEST

Valvola a sfera per gas combustibili a passaggio totale con presa di pressione
Full bore valve for fuel gas with pressure gage

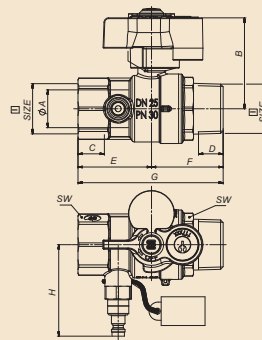
ART. S.1491 TOP•TEST



Valvola a sfera per gas combustibili f/f con serratura di morosità e rapido di presa pressione, nichelata.
Ball valve for fuel gas f/f with key locking device and quick plug connection.

SIZE	3/4"	1"							
ø A mm	20	25							
B mm	56	60							
C mm	16,3	19,1							
D mm	42	48,5							
E mm	35	41,5							
F mm	77	90							
G mm	58,5	62							
SW mm	31	38							

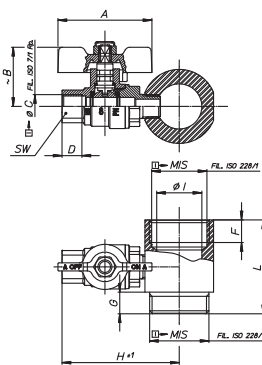
ART. S.1492 TOP•TEST



Valvola a sfera per gas combustibili m/f con serratura di morosità e rapido di presa pressione, nichelata.
Ball valve for fuel gas m/f with key locking device and quick plug connection.

SIZE	3/4"	1"							
ø A mm	20	25							
B mm	56	60							
C mm	16,3	19,1							
D mm	14,5	16,8							
E mm	42	48,5							
F mm	42,5	47,5							
G mm	84,5	96							
H mm	58,5	62							
SW mm	31	38							

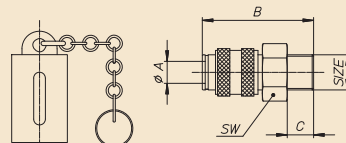
ART. R.0117 TOP•TEST



Cannotto maschio/femmina con valvola di presa.
Male/female fitting with by-pass valve.

SIZE	1/2"	3/4"	1"						
øA pass./bore	52	52	52						
~B mm	32,8	32,8	32,8						
øC mm	1/4"	1/4"	1/4"						
D mm	11	11	11						
SW E mm	27	32	38						
F mm	12	14	15						
G mm	9	10	12						
H+1 mm	59,5	62	65						
øI mm	15	20	25						
L mm	45	48	52						
SW mm	17	17	17						

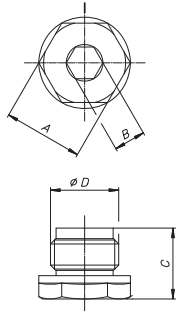
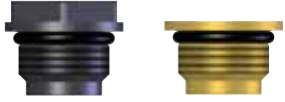
ART. S.0833 TOP•TEST



Connessione rapida maschio.
Fast connection male.

SIZE	1/4"								
øA mm	7,5								
B mm	38								
C mm	9								
SW mm	17								

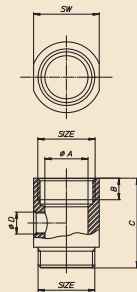
ART. S.1449 TOP•TEST



- S.1449P** - Tappo in plastica con o-ring.
- S.1449L** - Tappo in ottone con o-ring.
- S.1449P** - Plastic cap with o-ring.
- S.1449L** - Metal cap with o-ring.

SIZE	S1149P01	S1149L01							
A mm	15	15							
B mm	6	6							
C mm	13,4	11							
øD	¼"	¼"							

ART. R.0633 TOP•TEST



Cannotto maschio/femmina con presa da 1/4" .
Male/female fitting with port 1/4" .

SIZE	½"	¾"	1"						
øA pass./bore	15	20	25						
B mm	12	14	15						
C mm	45	48	52						
øD	¼"	¼"	¼"						
SW mm	27	32	38						